

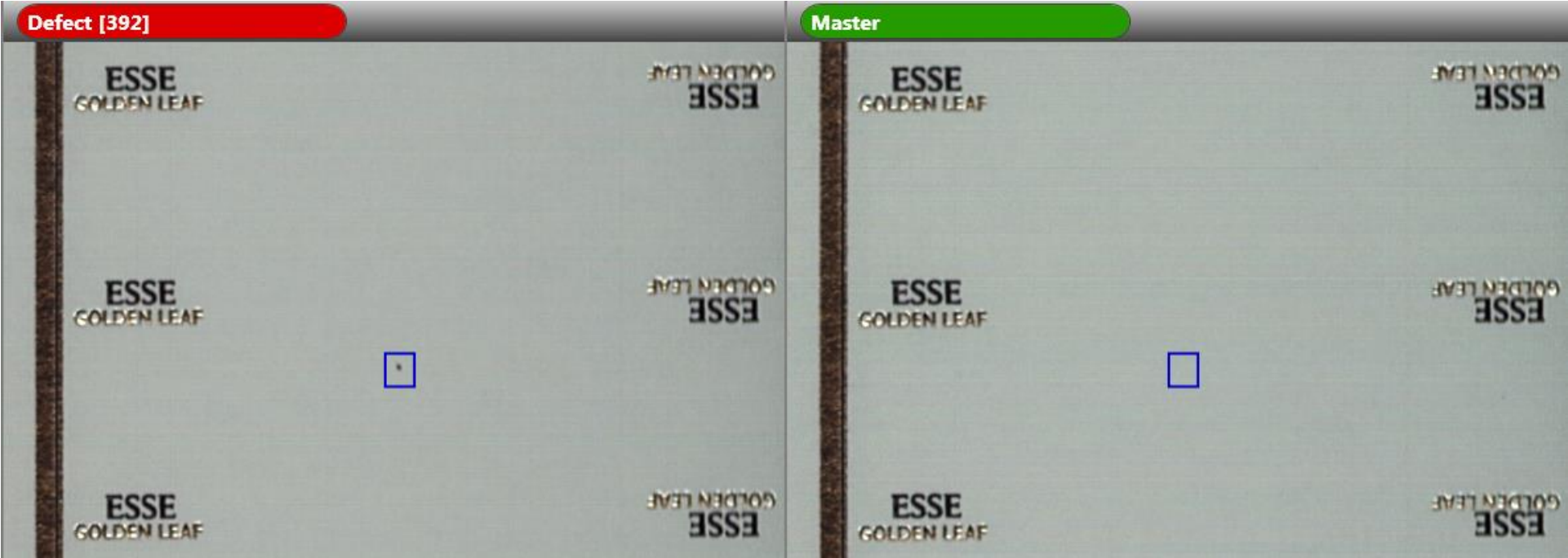
A large, thick, lime-green stylized letter 'A' that occupies the left side of the slide. It has a rounded top and tapers towards the bottom.

EXAMPLES OF DETECTION CAPABILITIES



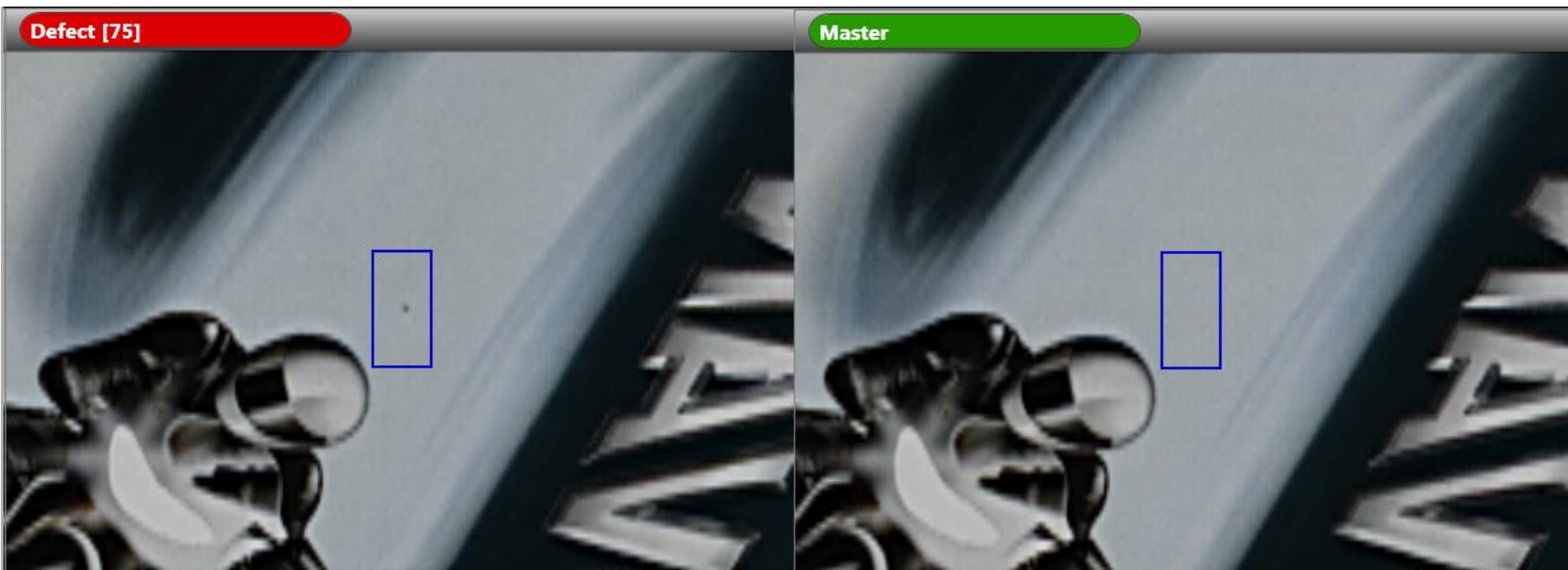


Spots



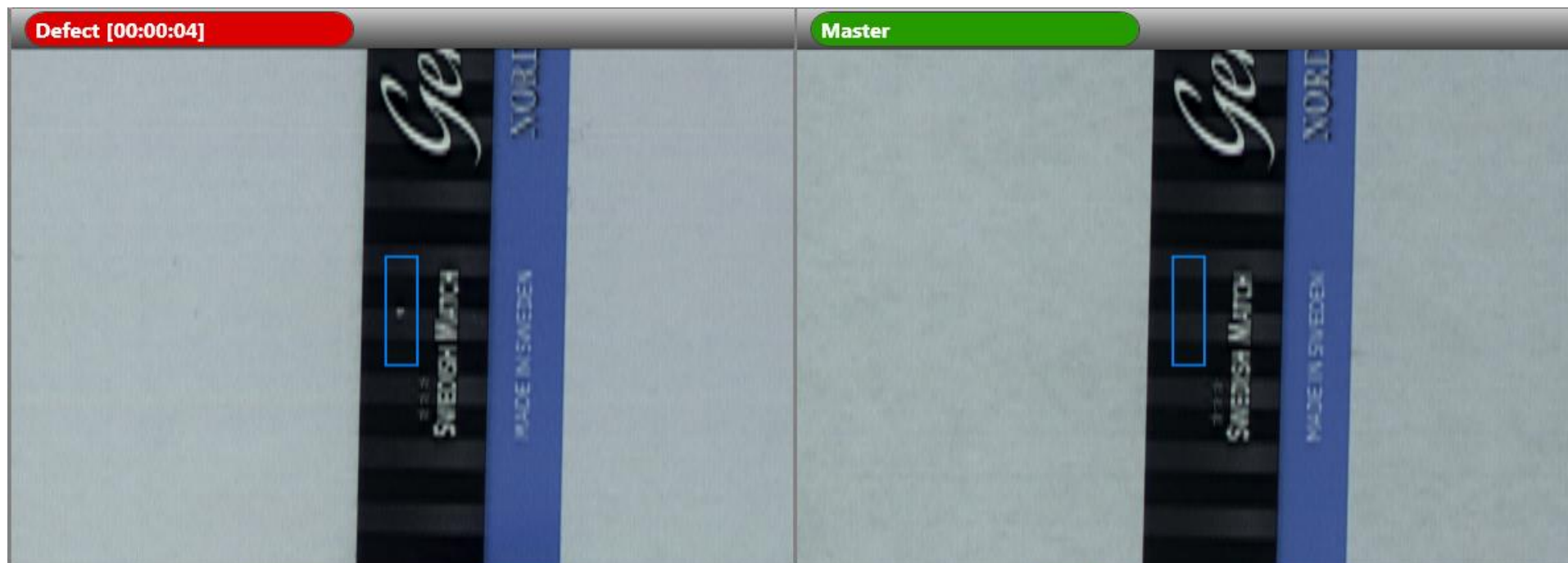


Spots



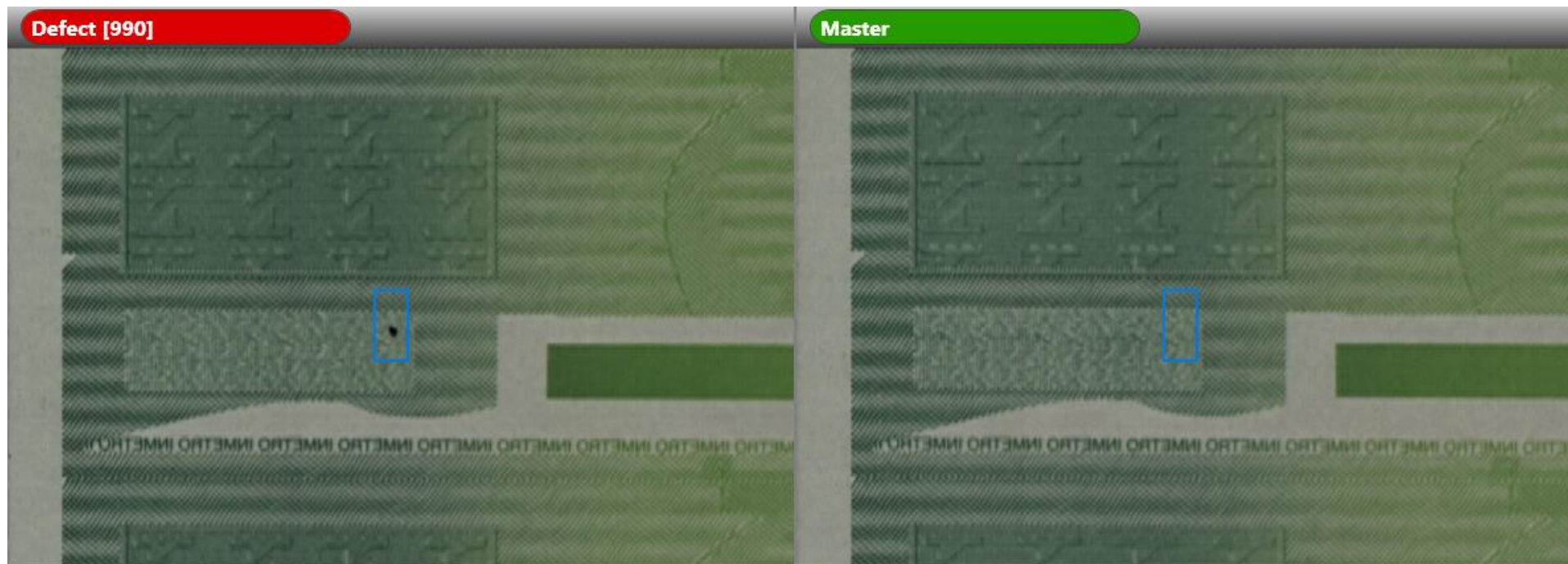


Spots



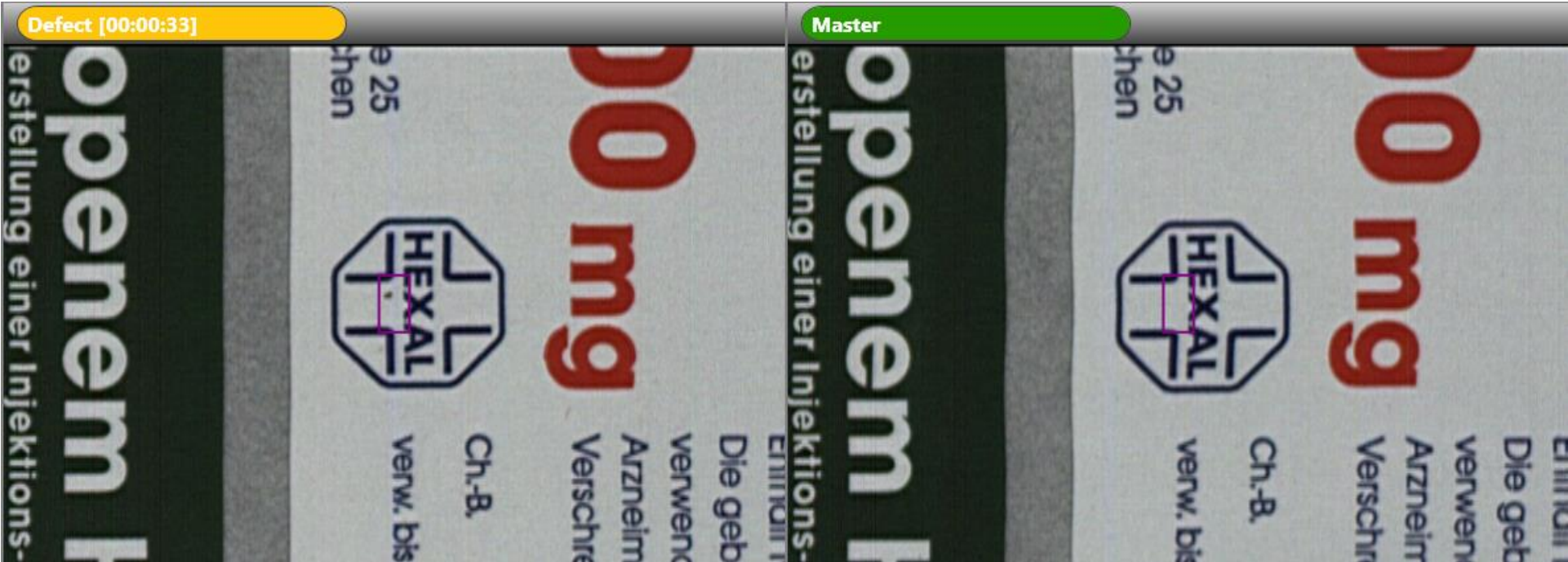


Spots





Spots





Spots





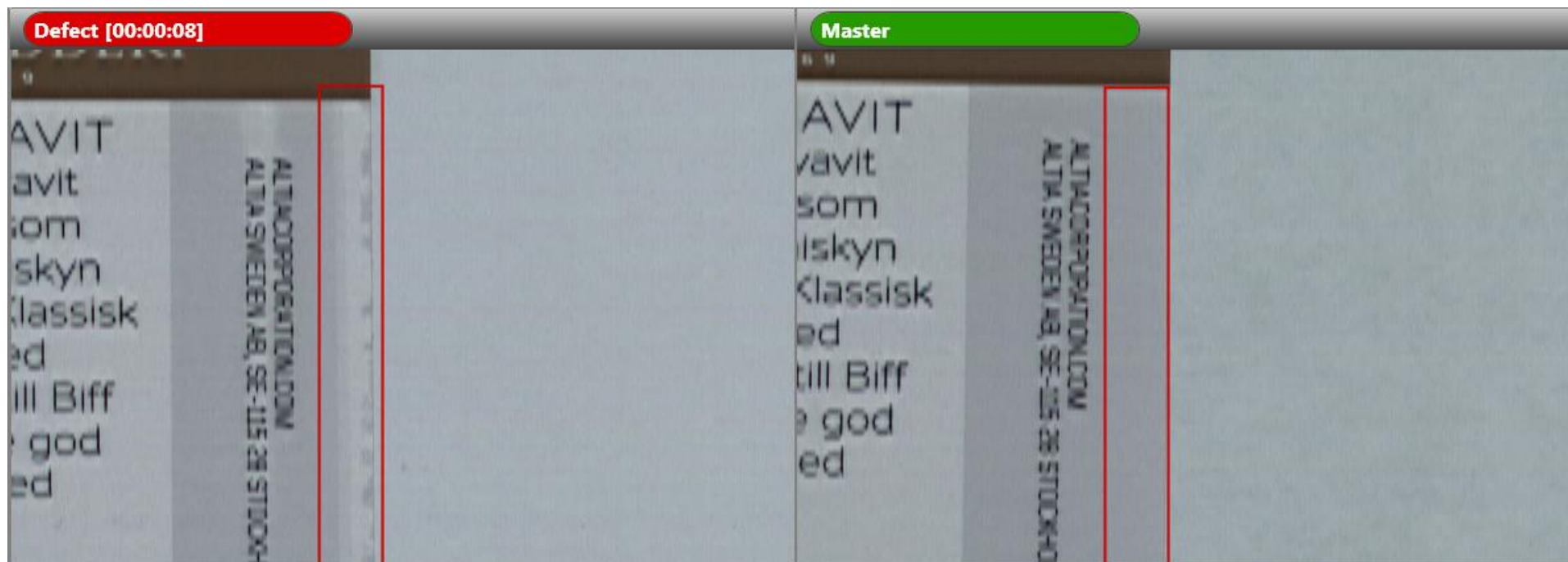


Streaks





Streaks





Streaks

Defect [2560]

0384500

Lot: 0384500

Use By:

Master

0384500

Lot: 0384500

Use By:

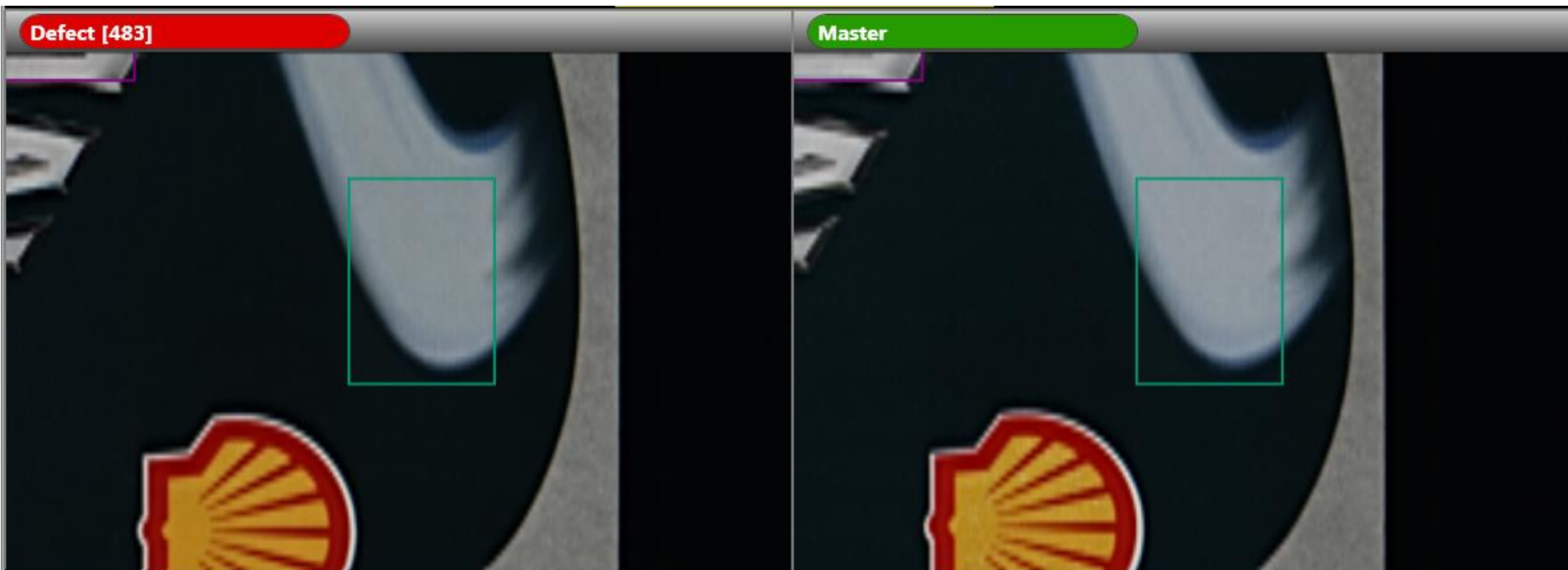


Streaks



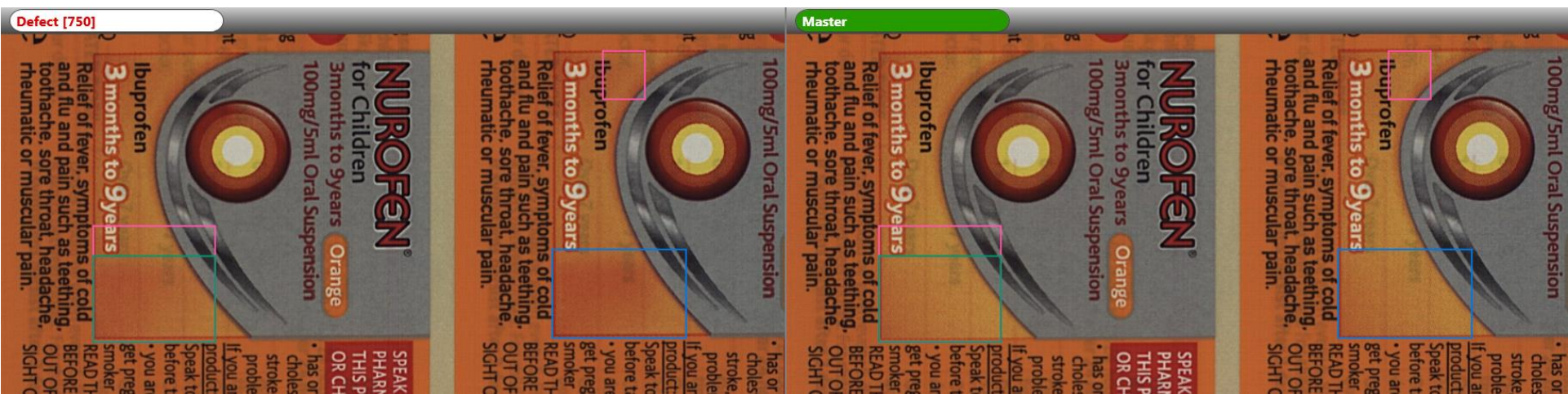


Color Variations



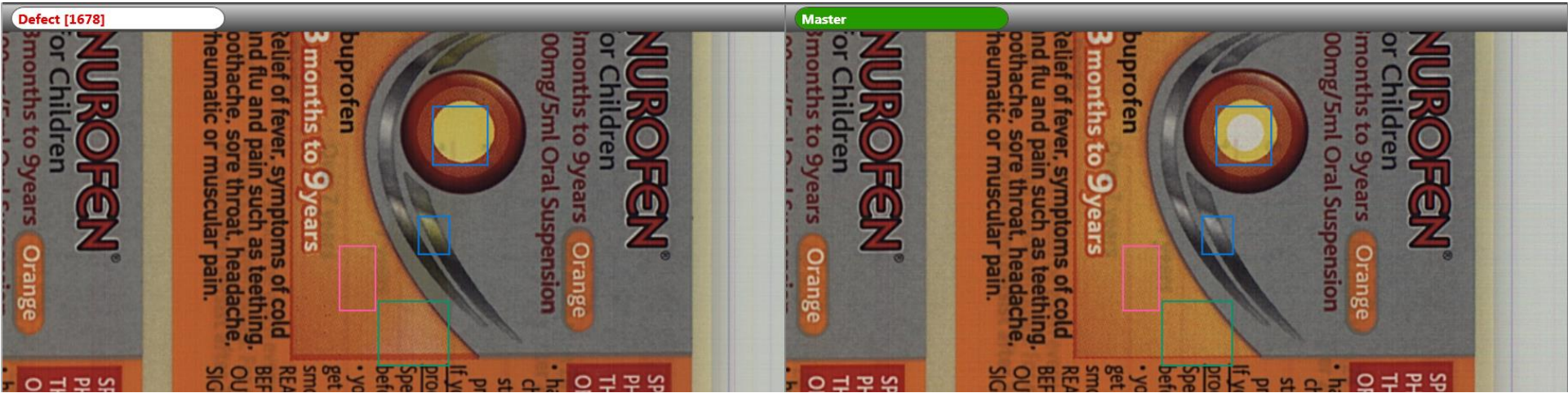


Color Variations



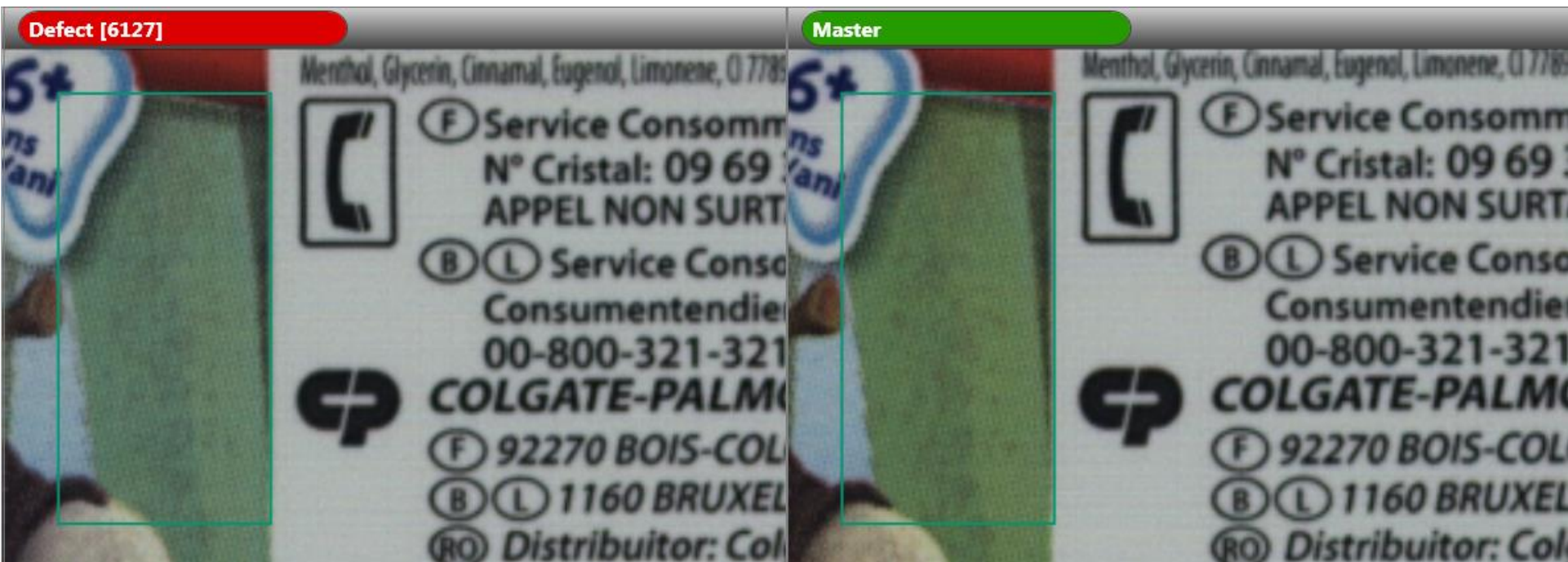


Color Variations



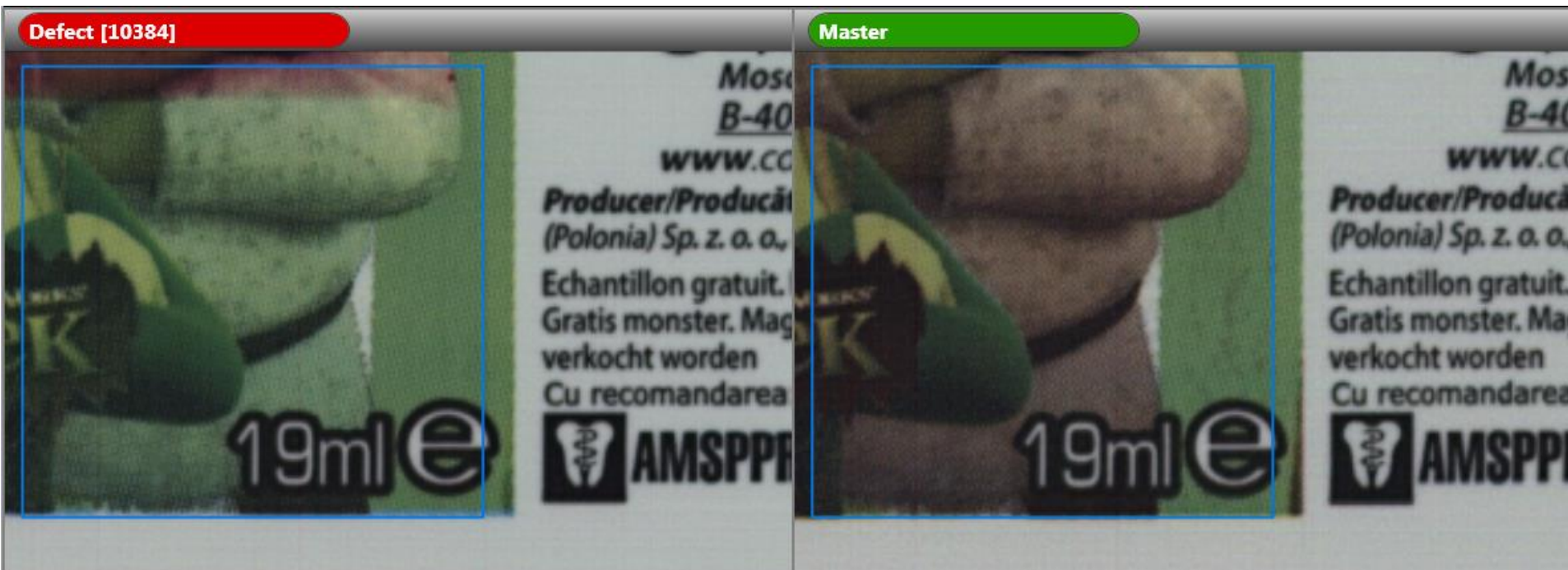


Color Variations





Color Variations





Color Smears

Defect [1278]

estrol, high blood pressure, a
ke, heart, liver, kidney or bowel
blems
are an ADULT taking this
CT:
to a pharmacist or your doctor
e taking it:
are pregnant • you are trying to
regnant • are elderly • are a
er
THE LEAFLET CAREFULLY
RE USE. KEEP ALL MEDICINES
OF THE REACH AND
T OF CHILDREN

0384500

Lot:
Use By:

Master

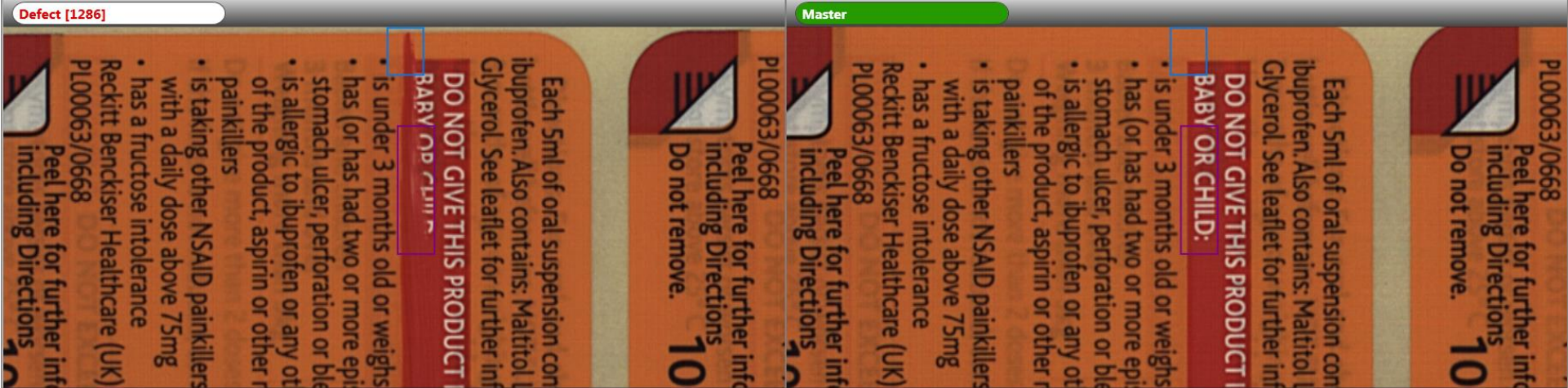
estrol, high blood pressure, a
ke, heart, liver, kidney or bowel
blems
are an ADULT taking this
CT:
to a pharmacist or your doctor
e taking it:
are pregnant • you are trying to
regnant • are elderly • are a
er
THE LEAFLET CAREFULLY
RE USE. KEEP ALL MEDICINES
OF THE REACH AND
T OF CHILDREN

0384500

Lot:
Use By:

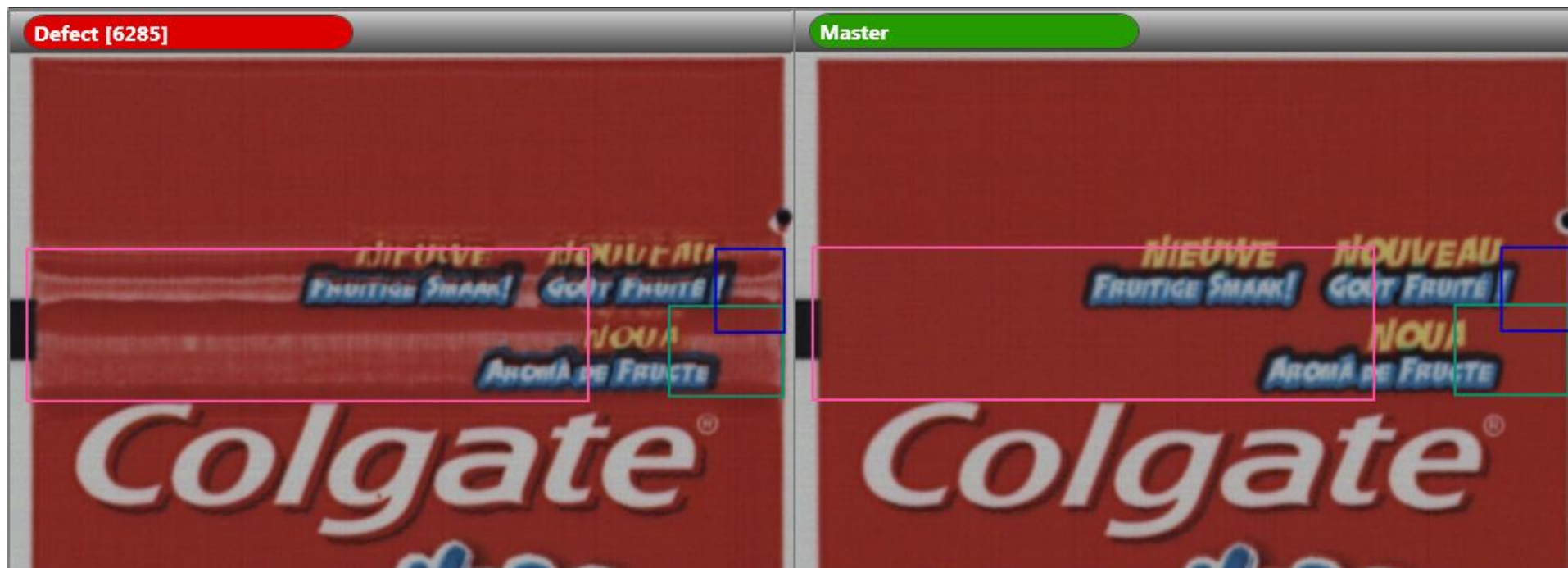


Color Smears



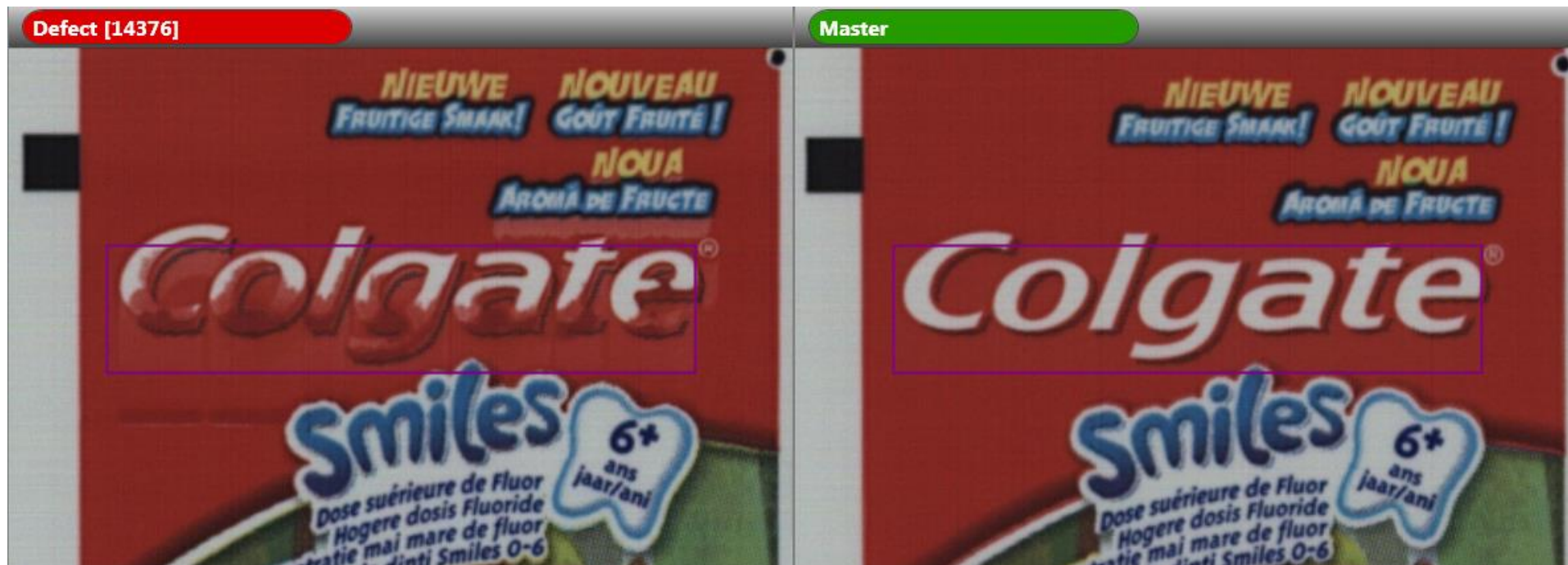


Color Smears



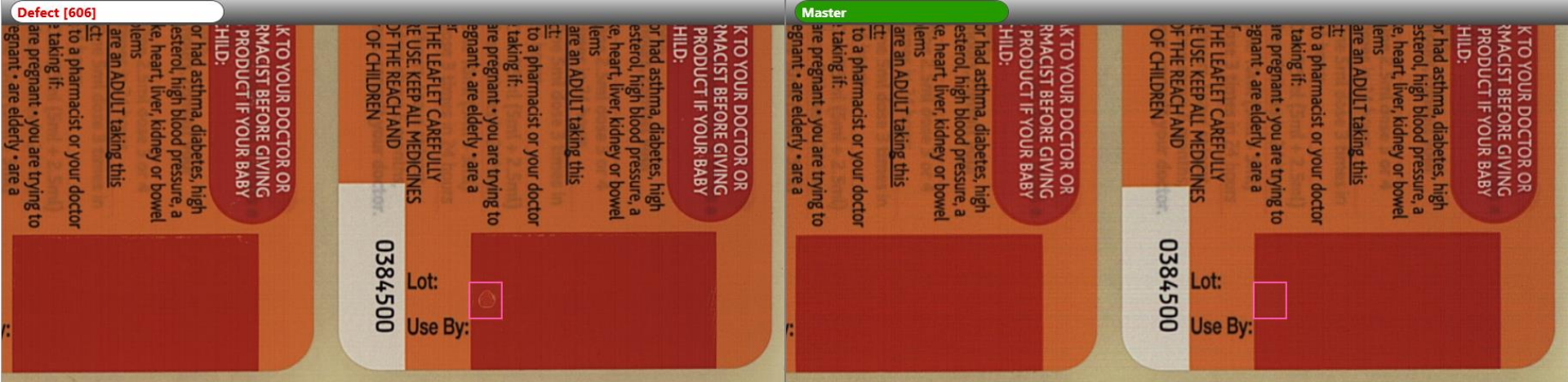


Color Smears





Ink Splashes





Ink Splashes

Defect [90]

BABY OR CHILD:

- is under 3 months old or weighs less than 5kg
- has (or has had two or more episodes of) a stomach ulcer, perforation or bleeding
- is allergic to ibuprofen or any other ingredient of the product, aspirin or other related painkillers
- is taking other NSAID painkillers, or aspirin with a daily dose above 75mg
- has a fructose intolerance

Reckitt Benckiser Healthcare (UK) Ltd. SL1 4AQ
PL00063/0668

Peel here for further information,
including Directions

Do not remove.

100mle

Master

BABY OR CHILD:

- is under 3 months old or weighs less than 5kg
- has (or has had two or more episodes of) a stomach ulcer, perforation or bleeding
- is allergic to ibuprofen or any other ingredient of the product, aspirin or other related painkillers
- is taking other NSAID painkillers, or aspirin with a daily dose above 75mg
- has a fructose intolerance

Reckitt Benckiser Healthcare (UK) Ltd. SL1 4AQ
PL00063/0668

Peel here for further information,
including Directions

Do not remove.

100mle

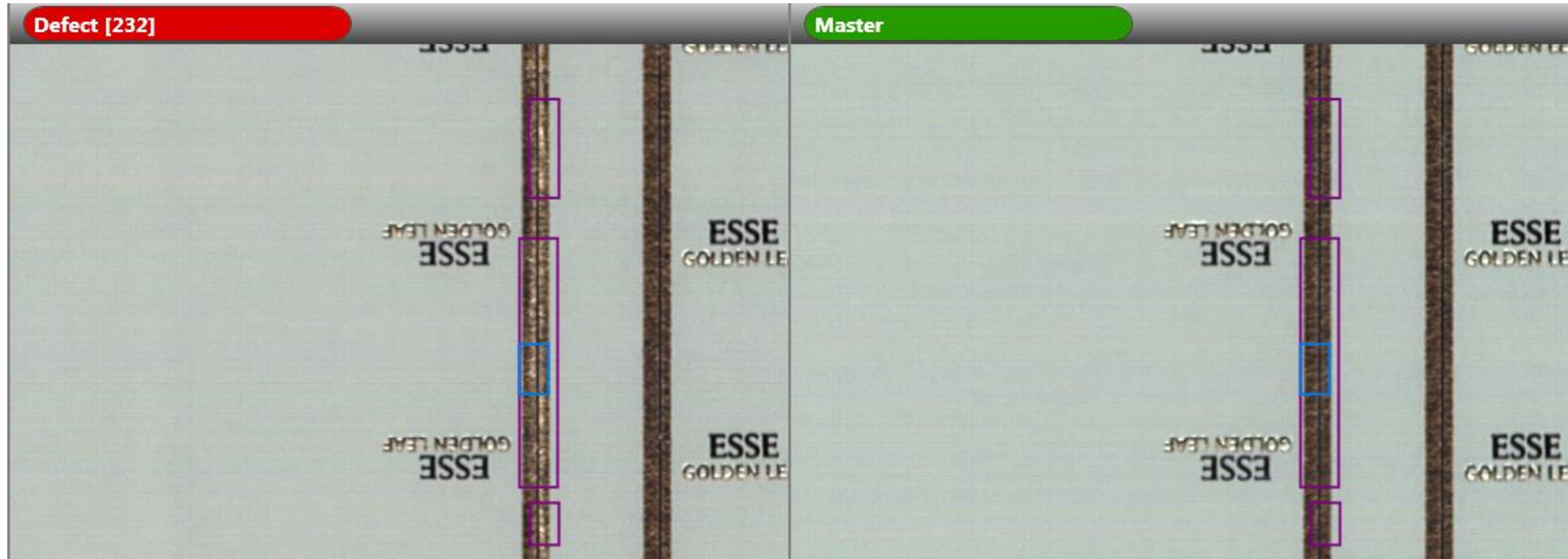


Ink Splashes

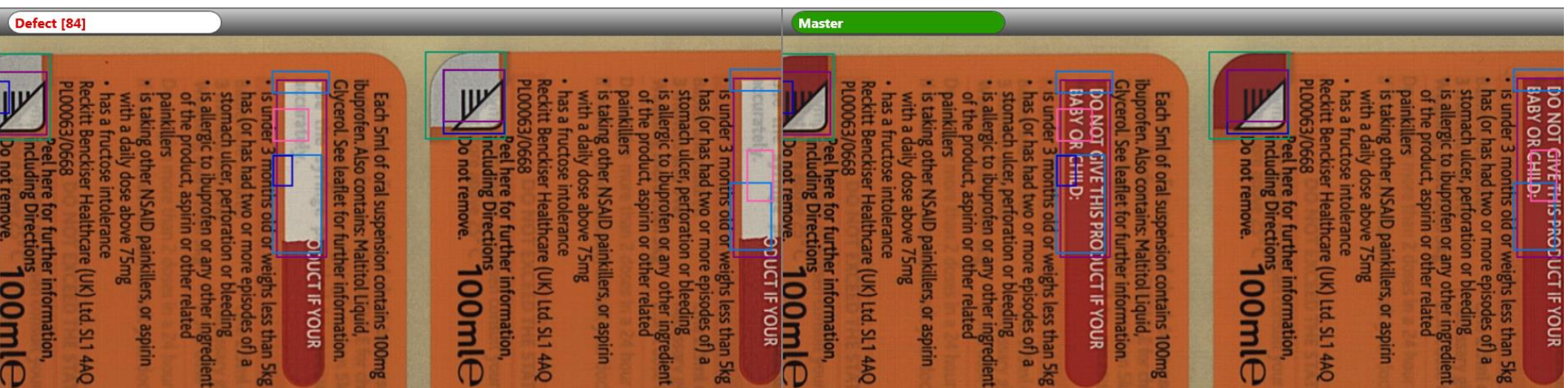




Miss Print

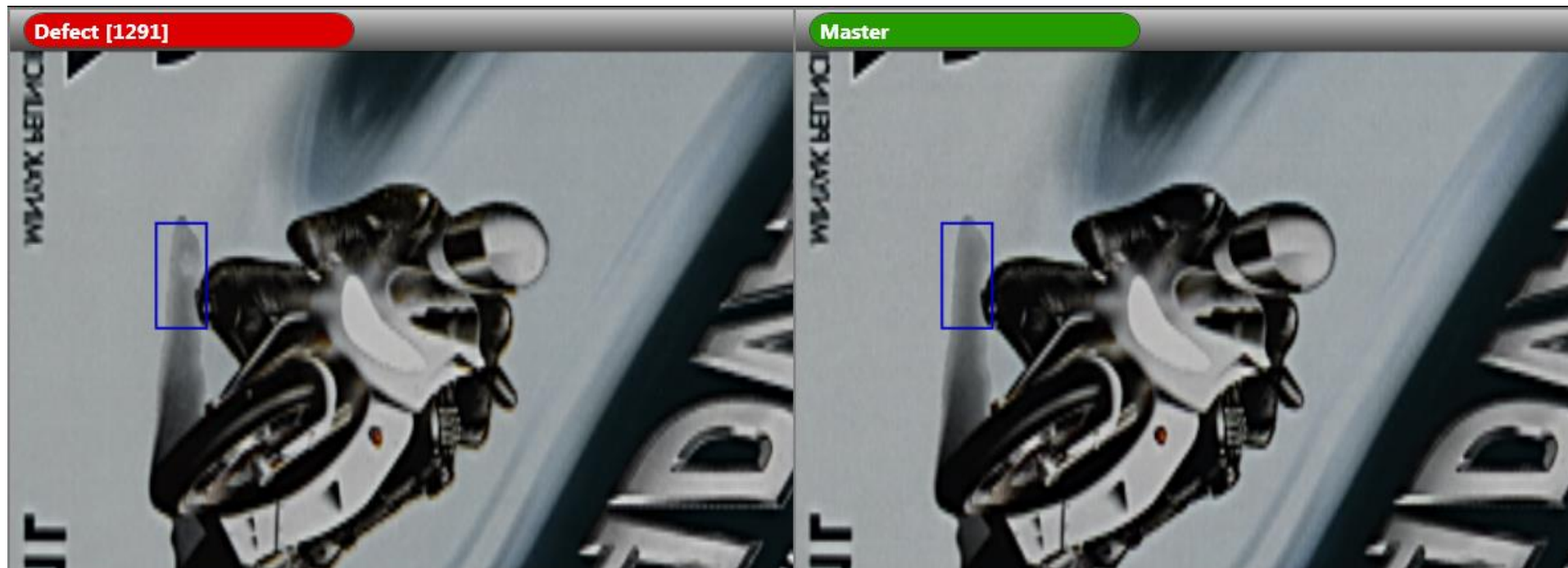


Miss Print



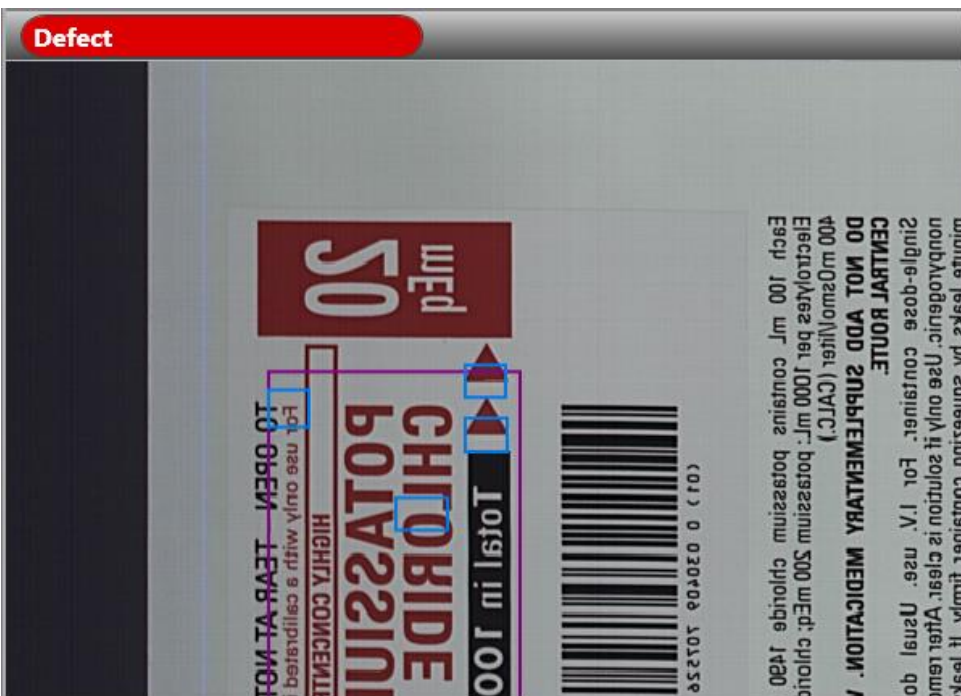
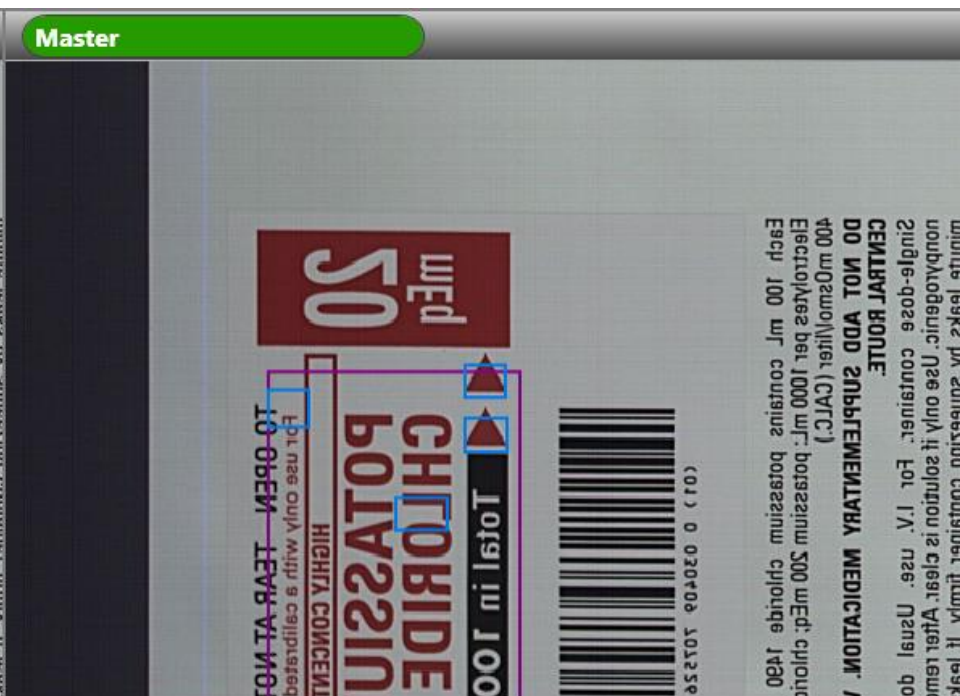


Miss Print



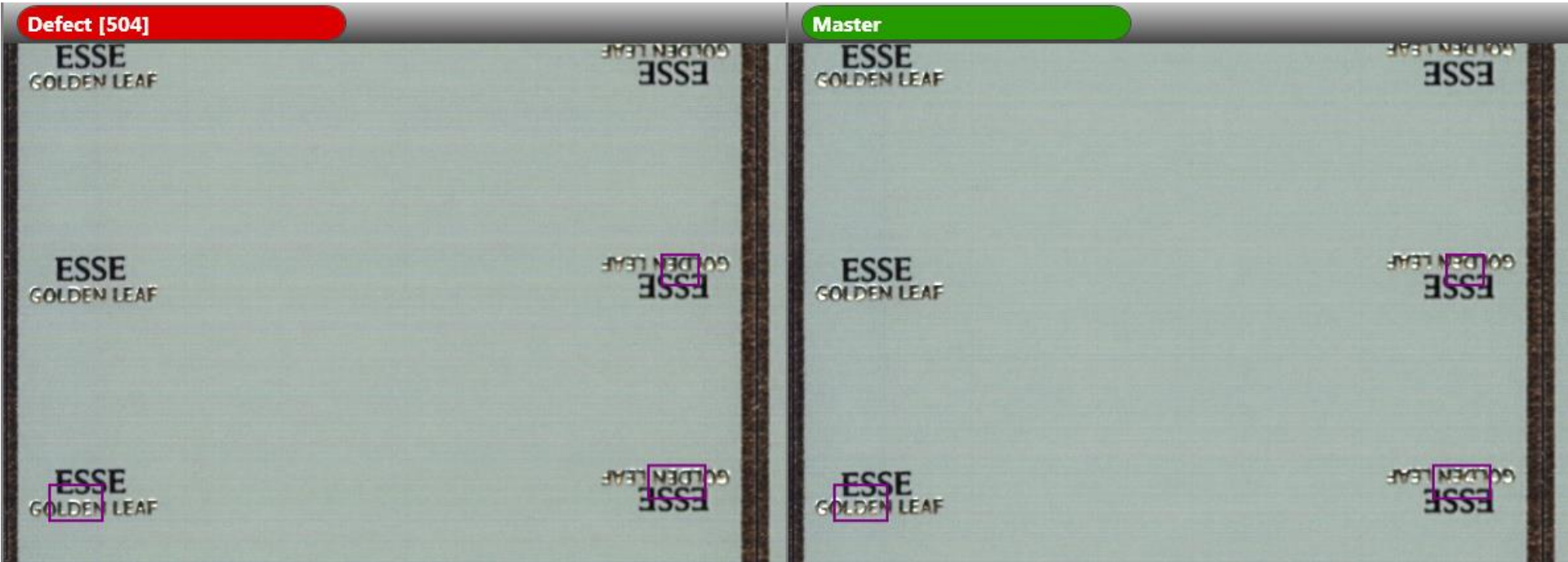


Miss Register

Defect	Master
	

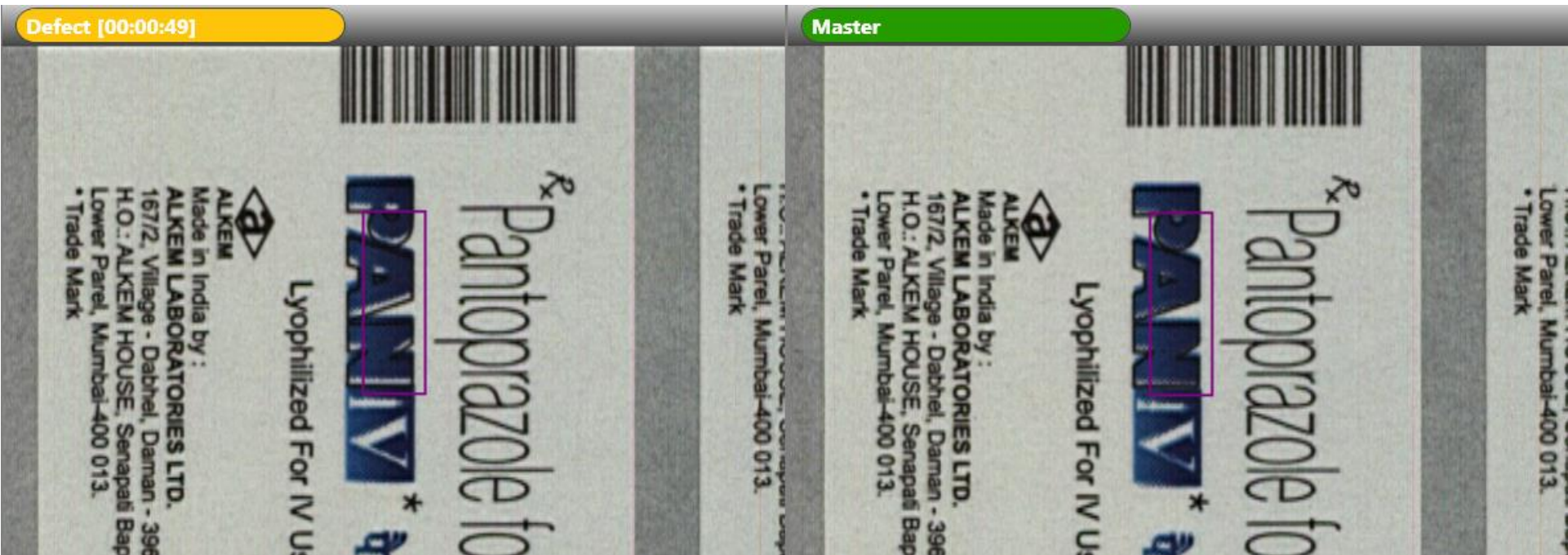


Miss Register



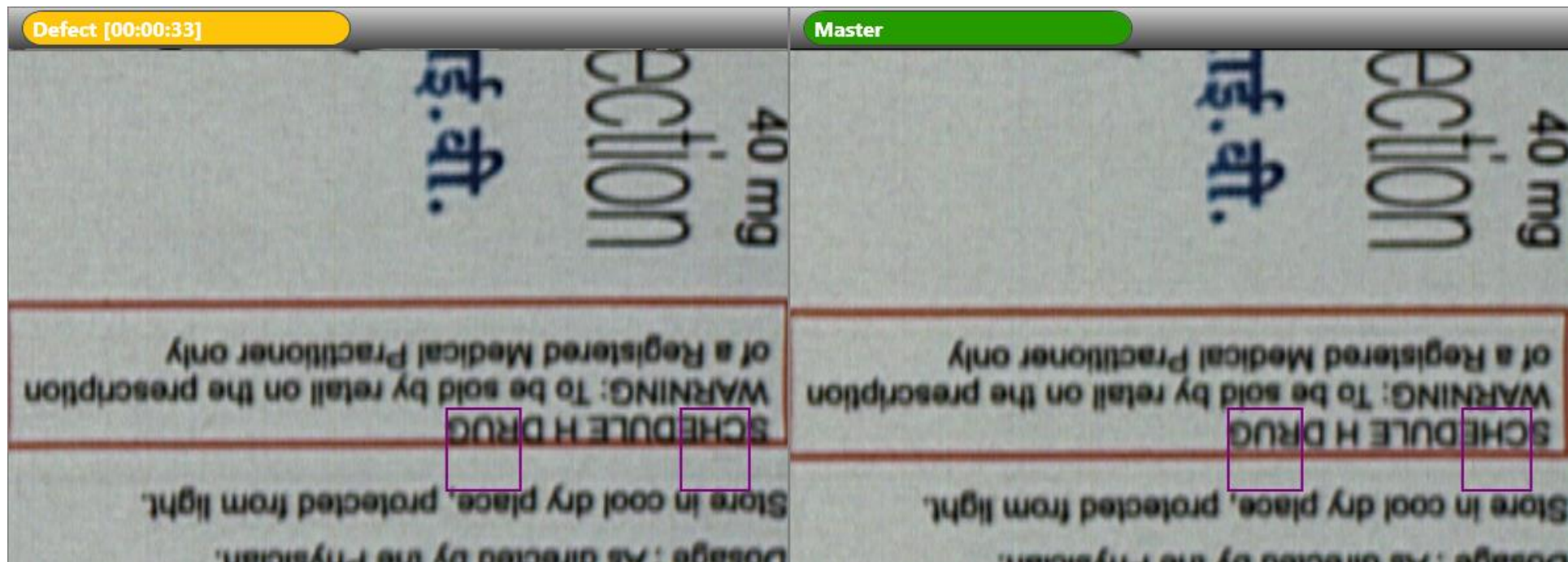


Miss Register



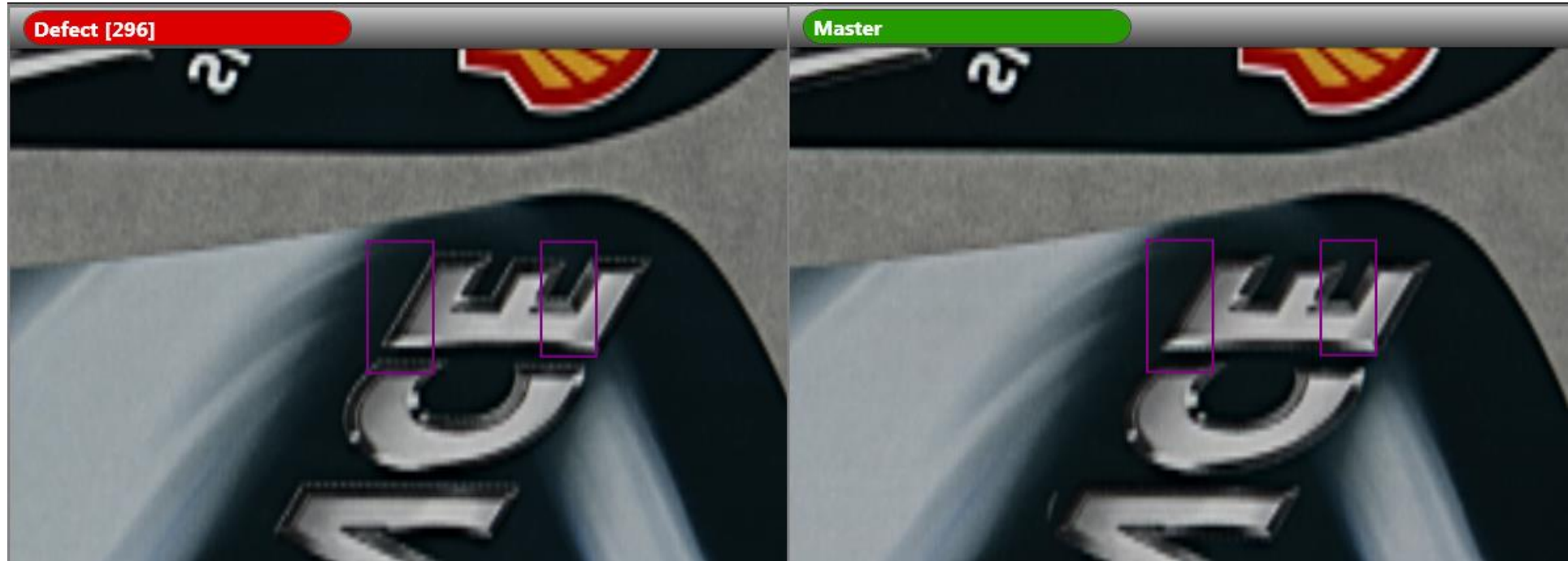


Miss Register



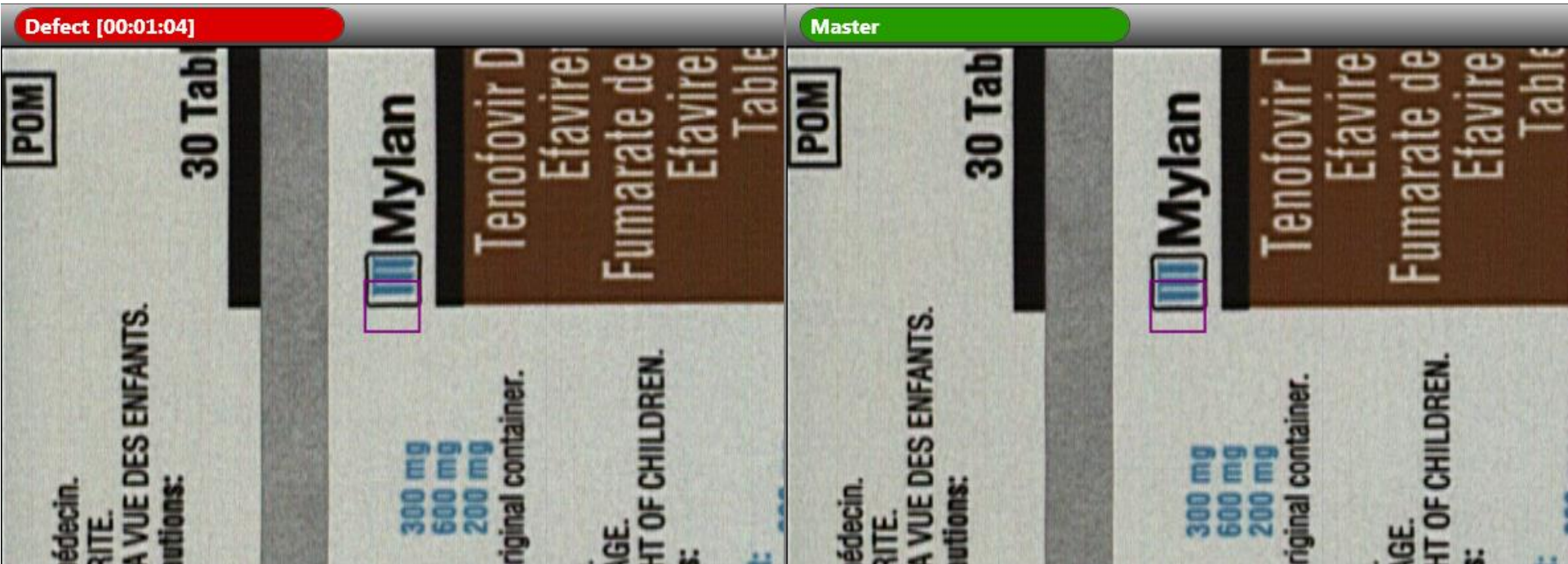


Miss Register







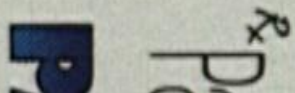

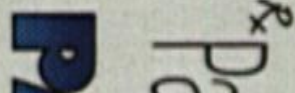



Miss Register





Miss Register

Defect [00:01:41]	Master
  ALKEM Made in India by : ALKEM LABORATORIES LTD. 167/2, Village - Dabhel, Daman - 396 2 H.O.: ALKEM HOUSE, Senapati Bapat Lower Parel, Mumbai-400 013. • Trade Mark	  ALKEM Made in India by : ALKEM LABORATORIES LTD. 167/2, Village - Dabhel, Daman - 396 2 H.O.: ALKEM HOUSE, Senapati Bapat Lower Parel, Mumbai-400 013. • Trade Mark
  ALKEM Made in India by : ALKEM LABORATORIES LTD. 167/2, Village - Dabhel, Daman - 396 2 H.O.: ALKEM HOUSE, Senapati Bapat Lower Parel, Mumbai-400 013. • Trade Mark	  ALKEM Made in India by : ALKEM LABORATORIES LTD. 167/2, Village - Dabhel, Daman - 396 2 H.O.: ALKEM HOUSE, Senapati Bapat Lower Parel, Mumbai-400 013. • Trade Mark



Miss Register



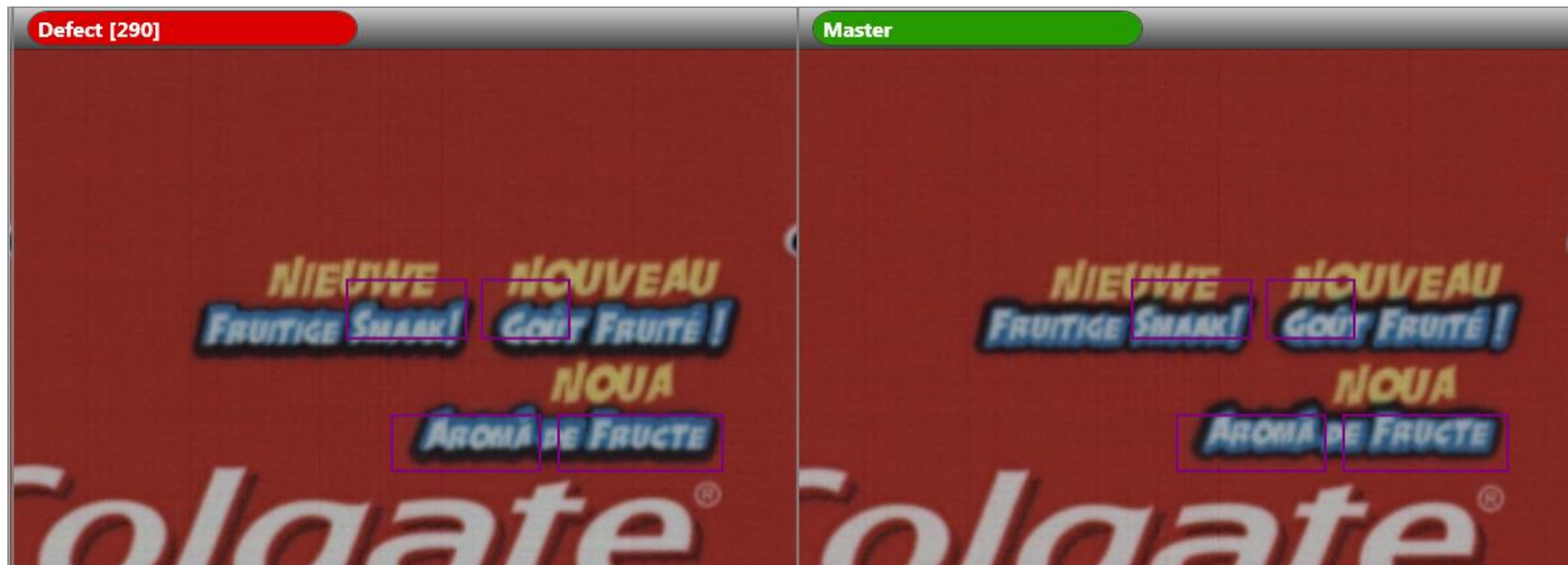


Miss Register



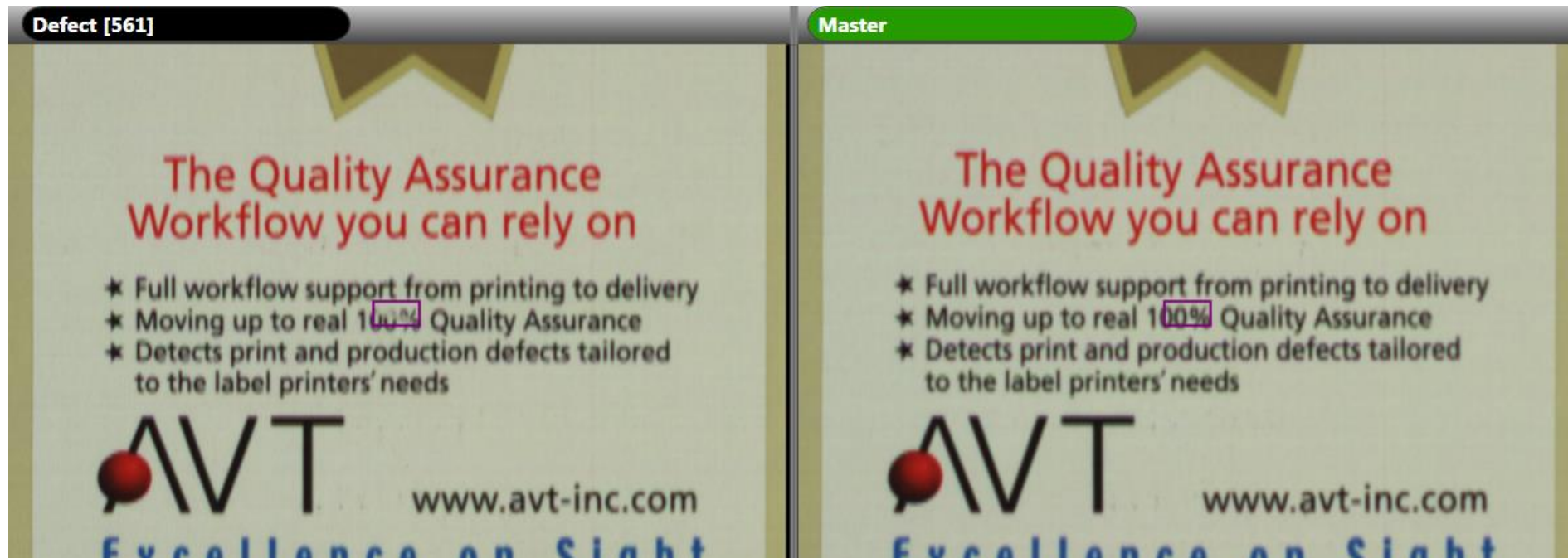


Miss Register





Text Defects





Text Defects

Defect [00:00:54]

...sung

...it Meropenem-Trihydrat, entspre
...m und Natriumcarbonat, wasse
...belage beachten!
...ng innerhalb einer Stunde
...n. Nur zum einmaligen Gebrau
...ugänglich aufbewahren!

Zul.-Nr. 77836.0
50009213
MH/DRUGs/KI
46044705

Master

...sung

...it Meropenem-Trihydrat, entspre
...m und Natriumcarbonat, wasse
...belage beachten!
...ng innerhalb einer Stunde
...n. Nur zum einmaligen Gebrau
...ugänglich aufbewahren!

Zul.-Nr. 77836.0
50009213
MH/DRUGs/KI
46044705



Text Defects



Text Defects

Defect [00:00:45]

Each film coated tablet contains:
Tenofovir disoproxil fumarate 300
Efavirenz 600
Emtricitabine 200

Do not store above 30°C. Store in the original container, tightly closed.

Dosage: As directed by the physician.
DO NOT EXCEED PRESCRIBED DOSAGE.
KEEP OUT OF THE REACH AND SIGHT OF CHILDREN.
Indications, Warnings & Precautions:
Read the package leaflet before use.

Chaque comprimé pelliculé contient:
Fumarate de ténofovir disoproxil 300
Efavirenz 600
Emtricitabine 200

À conserver à une température ne dépassant pas 30°C. Conserver dans l'emballage d'origine.

À conserver soigneusement fermé.

Posologie: Comme dirigé par votre médecin.
NE PAS DÉPASSER LA DOSE PRESCRITE.
TENIR HORS DE LA PORTEE ET DE LA VUE DES ENFANTS.
Indications, Mises en garde et Précautions:
Lire la notice avant utilisation.

Master

Each film coated tablet contains:
Tenofovir disoproxil fumarate 300
Efavirenz 600
Emtricitabine 200

Do not store above 30°C. Store in the original container, tightly closed.

Dosage: As directed by the physician.
DO NOT EXCEED PRESCRIBED DOSAGE.
KEEP OUT OF THE REACH AND SIGHT OF CHILDREN.
Indications, Warnings & Precautions:
Read the package leaflet before use.

Chaque comprimé pelliculé contient:
Fumarate de ténofovir disoproxil 300
Efavirenz 600
Emtricitabine 200

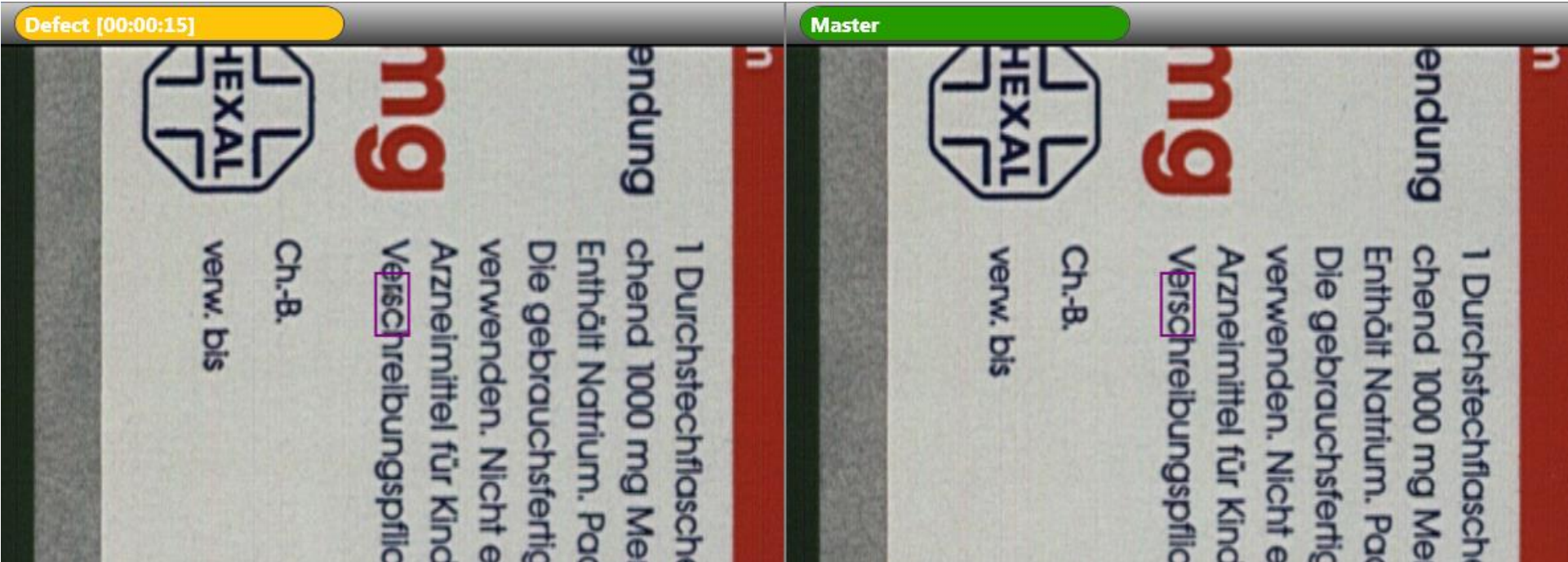
À conserver à une température ne dépassant pas 30°C. Conserver dans l'emballage d'origine.

À conserver soigneusement fermé.

Posologie: Comme dirigé par votre médecin.
NE PAS DÉPASSER LA DOSE PRESCRITE.
TENIR HORS DE LA PORTEE ET DE LA VUE DES ENFANTS.
Indications, Mises en garde et Précautions:
Lire la notice avant utilisation.



Text Defects



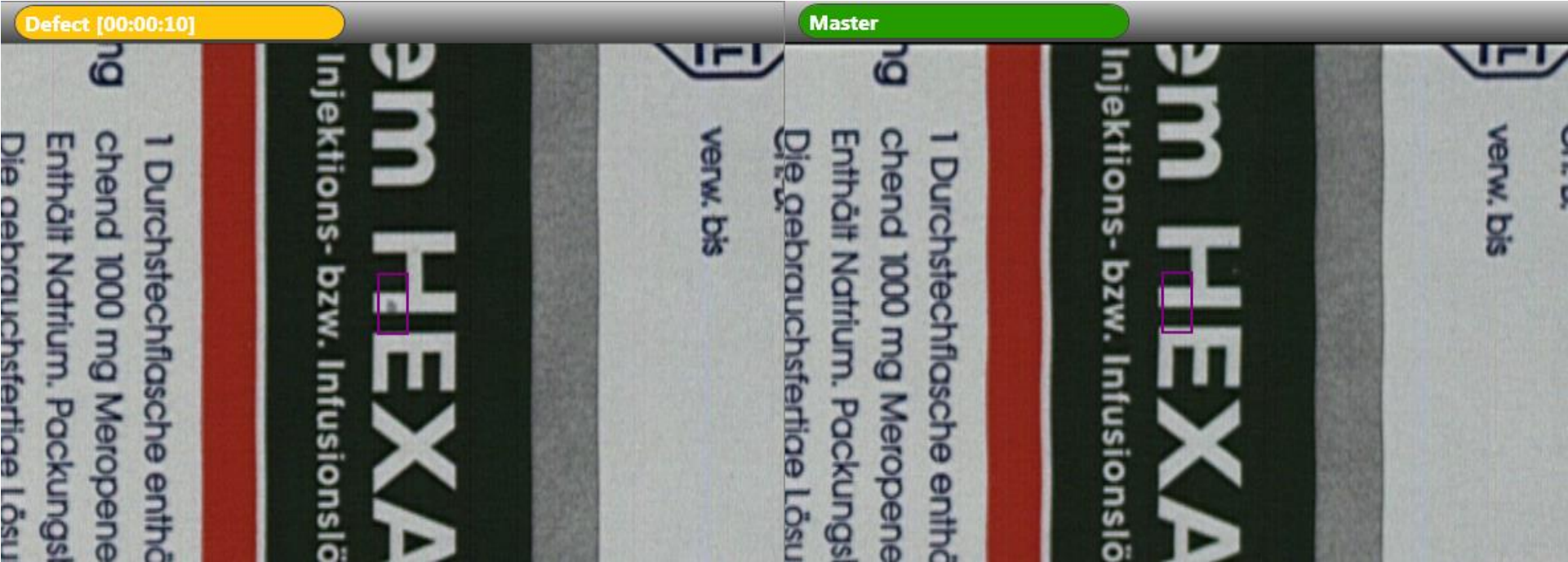


Text Defects

Defect [00:01:25]	Master
<p>Marketed by: / Commercialisé par: Matrix (A division of / Une division de Mylan Laboratoire)</p> <p>NAFDAC Regn. No.: A4-2806 Zambia Regn. No.: 014/024 TAN 09, 287 J05A MAT Botswana Regn. No.: BOT 080140 Zimbabwe Regn. No.: 2010/7.13/</p> <p>B.No./Lot: Mfd./Fab.: Exp.: Mfg. Lic. No./Lic. Fab. No.: NKD/</p>	<p>Marketed by: / Commercialisé par: Matrix (A division of / Une division de Mylan Laboratoire)</p> <p>NAFDAC Regn. No.: A4-2806 Zambia Regn. No.: 014/024 TAN 09, 287 J05A MAT Botswana Regn. No.: BOT 080140 Zimbabwe Regn. No.: 2010/7.13/</p> <p>B.No./Lot: Mfd./Fab.: Exp.: Mfg. Lic. No./Lic. Fab. No.: NKD/</p>



Text Defects





Text Defects

Defect [00:01:42]

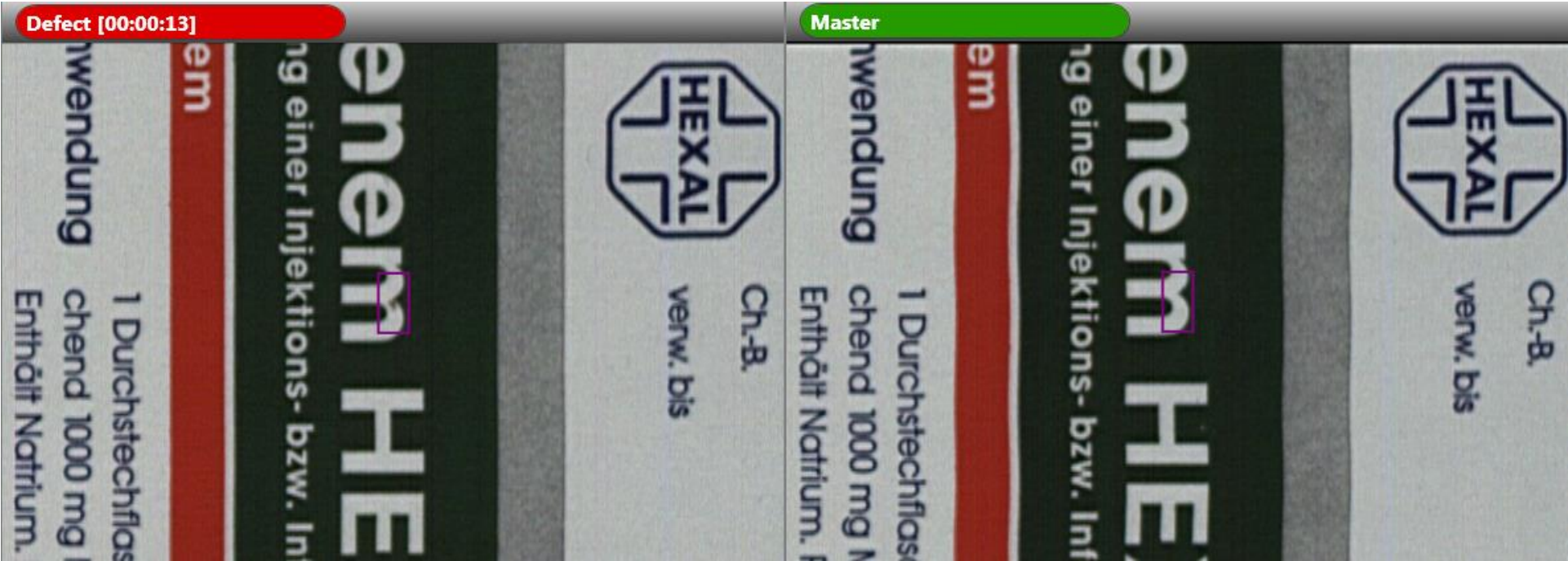
each film coated tablet contains:
tenofovir disoproxil fumarate 300 mg
emtricitabine 200 mg
not store above 30°C. Store in the original container tightly closed.
Usage: As directed by the physician.
DO NOT EXCEED PRESCRIBED DOSAGE.
KEEP OUT OF THE REACH AND SIGHT OF CHILDREN. See Warnings & Precautions: Read the package leaflet before use.
Chaque comprimé pelliculé contient:
fumarate de ténofovir disoproxil 300 mg
émtricitabine 200 mg
conserver à une température ne dépassant pas 30°C. Conserver dans l'emballage d'origine.
Conservation: Comme dirigé par votre médecin.
NE PAS DÉPASSER LA DOSE PRESCRITE.
TENIR HORS DE LA PORTÉE ET DE LA VUE DES ENFANTS. Voir les Mises en garde et Précautions: Lire la notice avant utilisation.

Master

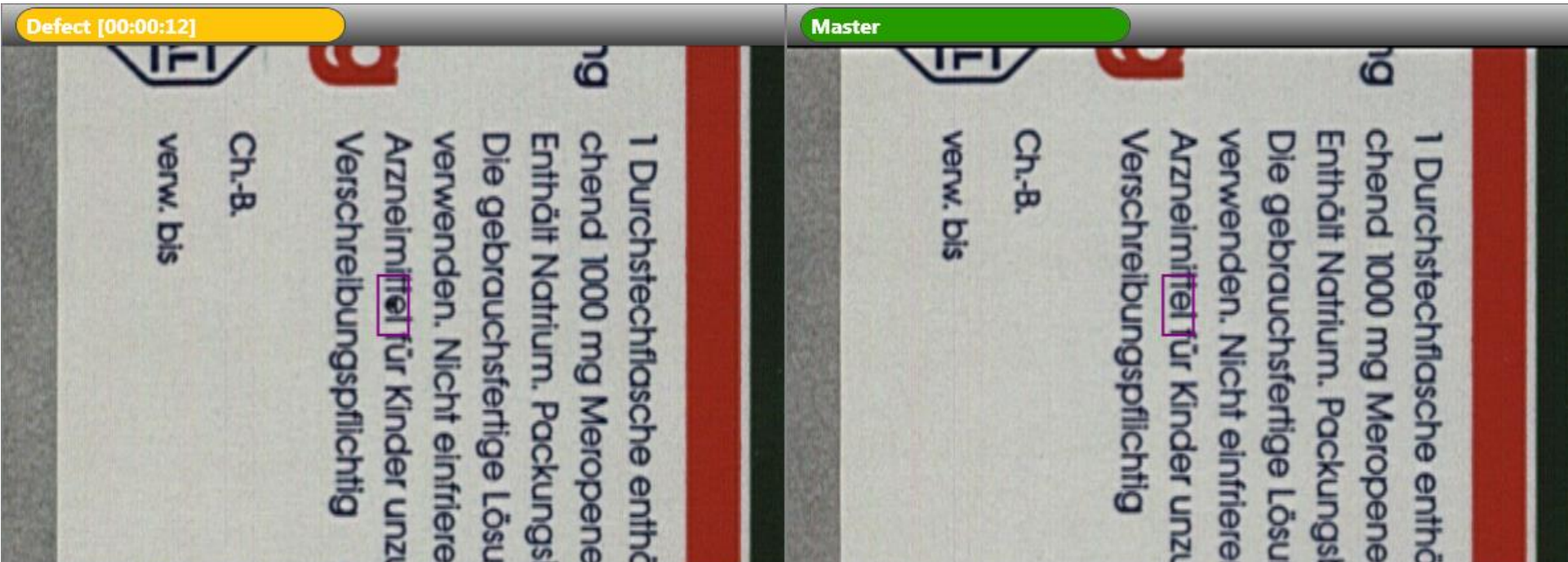
each film coated tablet contains:
tenofovir disoproxil fumarate 300 mg
emtricitabine 200 mg
do not store above 30°C. Store in the original container tightly closed.
Usage: As directed by the physician.
DO NOT EXCEED PRESCRIBED DOSAGE.
KEEP OUT OF THE REACH AND SIGHT OF CHILDREN. See Warnings & Precautions: Read the package leaflet before use.
Chaque comprimé pelliculé contient:
fumarate de ténofovir disoproxil 300 mg
émtricitabine 200 mg
conserver à une température ne dépassant pas 30°C. Conserver dans l'emballage d'origine.
Conservation: Comme dirigé par votre médecin.
NE PAS DÉPASSER LA DOSE PRESCRITE.
TENIR HORS DE LA PORTÉE ET DE LA VUE DES ENFANTS. Voir les Mises en garde et Précautions: Lire la notice avant utilisation.



Text Defects



Text Defects



Text Defects

Defect [00:00:21]

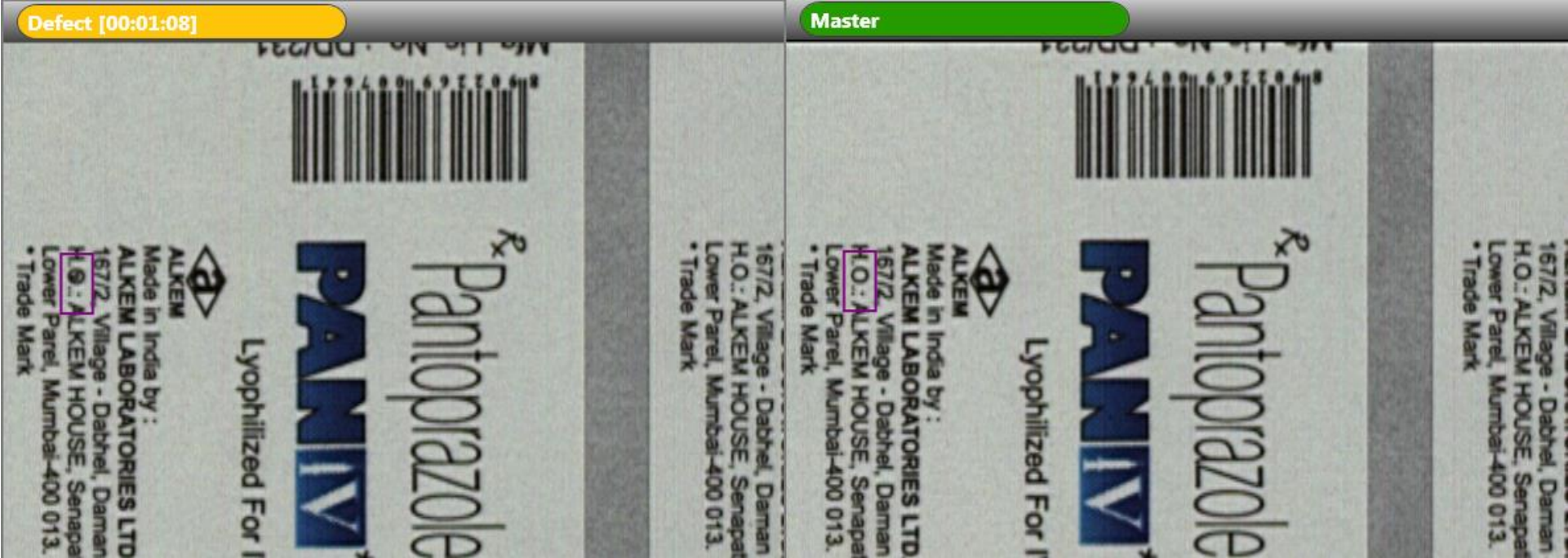
200 mg
Store in the original container.
tightly closed.
by the physician.
PRESCRIBED DOSAGE.
REACH AND SIGHT OF CHILDREN.
Warnings & Precautions:
leaflet before use.
é pelliculé contient:
300 mg
600 mg
200 mg
température ne dépassant pas 30°C.
l'emballage d'origine.
eusement fermé.
ne dirigé par votre médecin.
ER LA DOSE PRESCRITE.
LA PORTÉE ET DE LA VUE DES ENFANTS.
es en garde et Précautions:
nt utilisation.

Master

200 mg
Store in the original container.
tightly closed.
by the physician.
PRESCRIBED DOSAGE.
REACH AND SIGHT OF CHILDREN.
Warnings & Precautions:
leaflet before use.
é pelliculé contient:
300 mg
600 mg
200 mg
température ne dépassant pas 30°C.
l'emballage d'origine.
eusement fermé.
ne dirigé par votre médecin.
ER LA DOSE PRESCRITE.
LA PORTÉE ET DE LA VUE DES ENFANTS.
es en garde et Précautions:
nt utilisation.

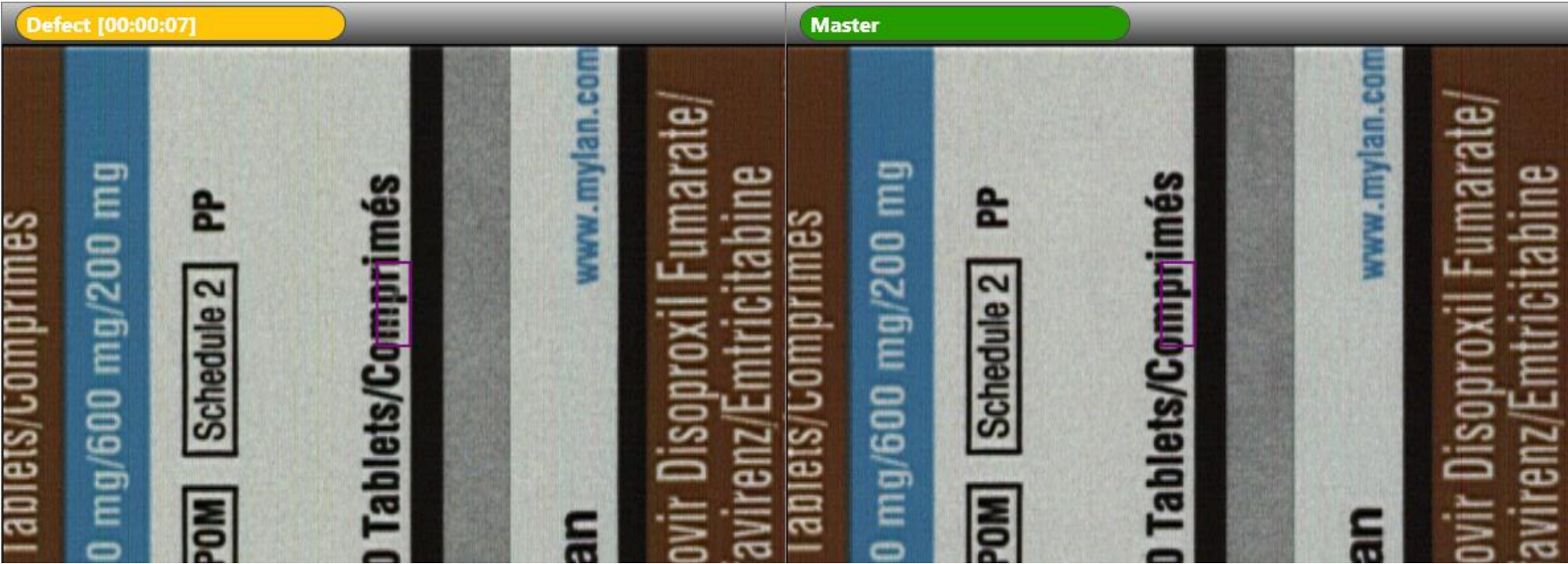


Text Defects





Text Defects





Text Defects

Defect [00:00:53]

PL 7089-01

Mfg. Lic. No.: DD/231

Batch No. :

Mfg. Date :

उत्पादन की तिथि

Exp. Date :

समष्टि की तिथि

MRP Rs. :

अधिकतम खूदरा मूल्य

Inclusive of all taxes

8 9 0 2 3 6 9 0 0 7 6 4 1

PL 7089-01

Master

PL 7089-01

Mfg. Lic. No.: DD/231

Batch No. :

Mfg. Date :

उत्पादन की तिथि

Exp. Date :

समष्टि की तिथि

MRP Rs. :

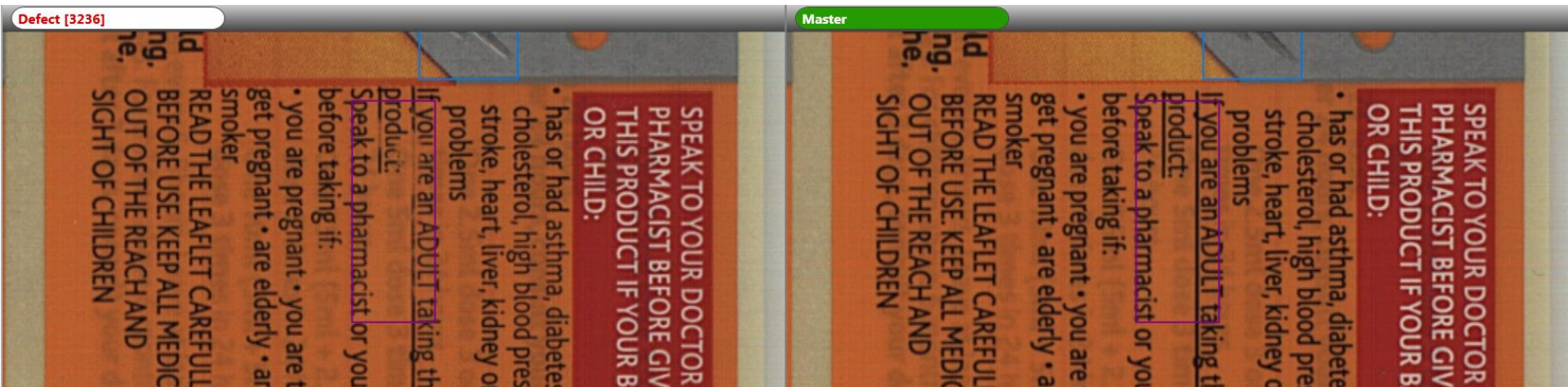
अधिकतम खूदरा मूल्य

Inclusive of all taxes

8 9 0 2 3 6 9 0 0 7 6 4 1

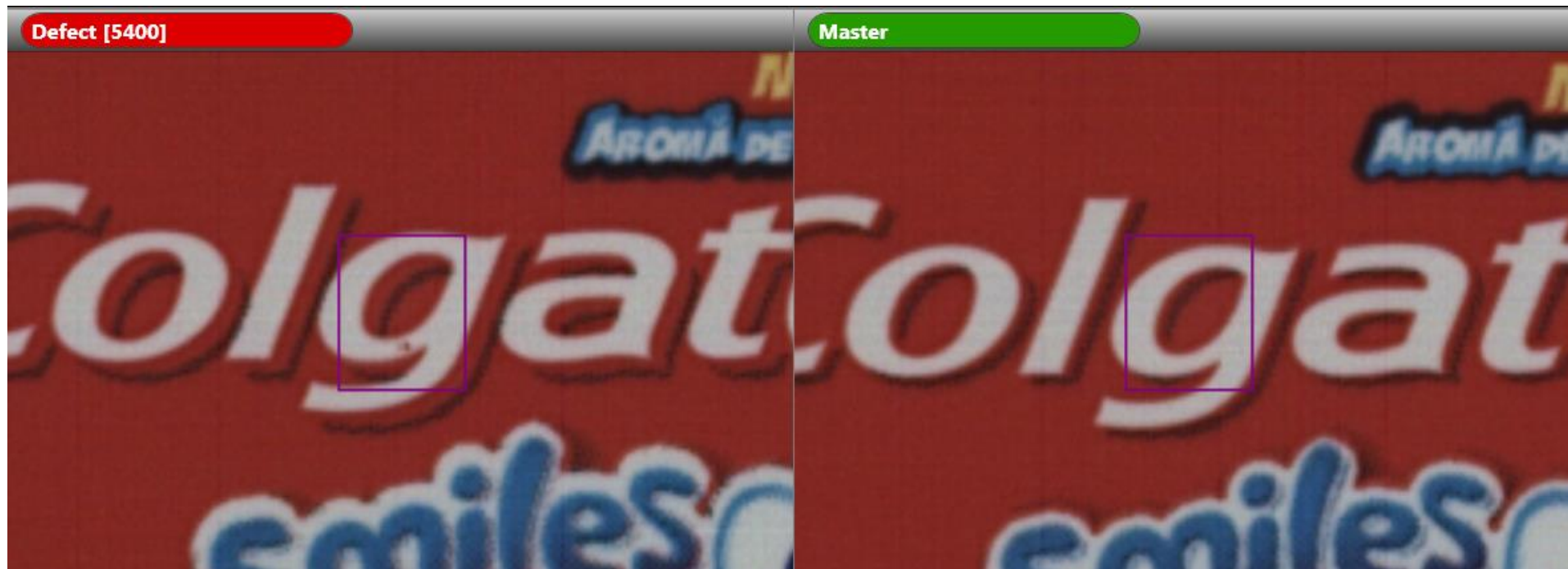
PL 7089-01

Text Defects



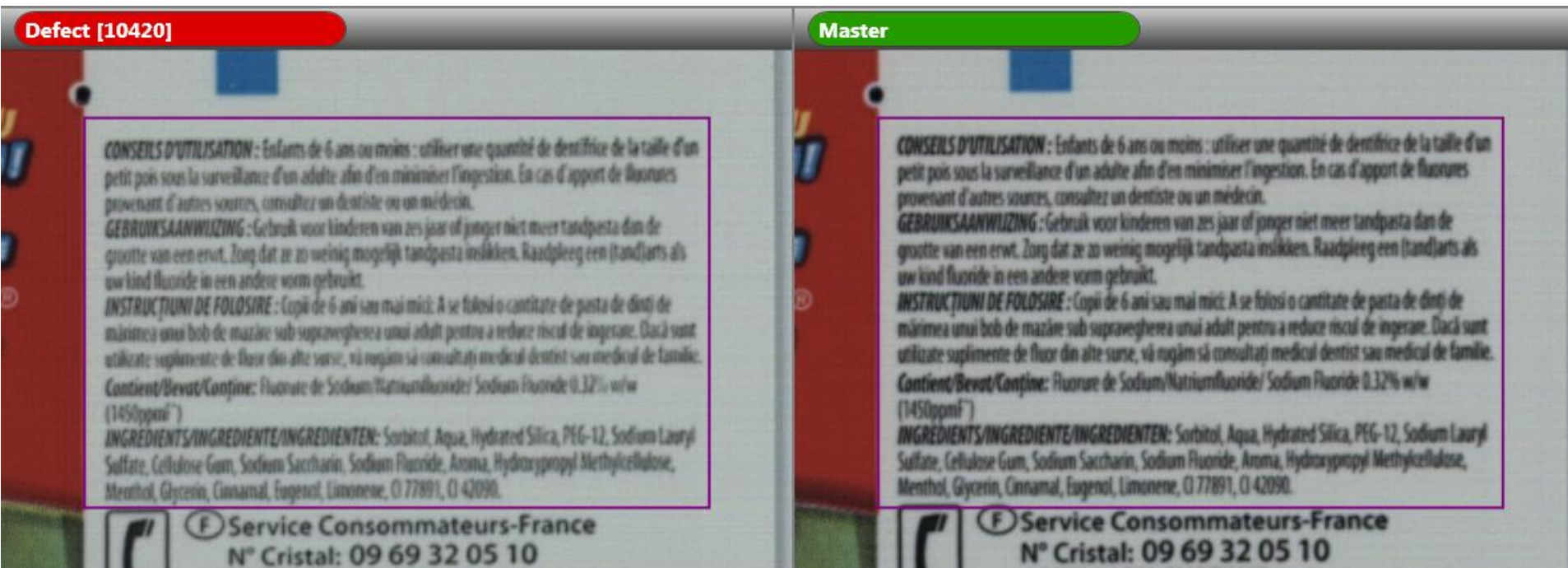


Text Defects





Text Defects





DIE CUT/ MATRIX

Defect [13832]	Master
<p>GEbruksaAnwIzIng: Gebruik voor kinderen van zes jaar of jonger niet meer groter van een erwt. Zorg dat ze zo weinig mogelijk tandpasta inslikken. Gaad uw kind fluoride in een andere vorm gebruikt.</p> <p>INSTRUCȚIUNI DE FOLDSIRE: Copii de 6 ani sau mai mici. A se folosi o cantitate mărima unui bob de mazăre sub supravegherea unui adult pentru a reduce risul utilizate supliment de fluor din alte surse, vă rugăm să consultați medicul dent.</p> <p>Contient/Bevat/Conține: Fluorure de Sodium/Natriumfluoride/ Sodium Fluoride (1450ppmF)</p> <p>INGREDIENTS/INGREDIENTE/INGREDIENTEN: Sorbitol, Aqua, Hydrated Silica, Sulfate, Cellulose Gum, Sodium Saccharin, Sodium Fluoride, Aroma, Hydroxypropyl Methylcellulose, Menthol, Glycerin, Cinnamal, Eugenol, Limonene, CI 77891, CI 42090.</p> <p>☎ F Service Consommateurs - France N° Cristal: 09 69 32 05 10 APPEL NON SURTAXE</p> <p>B L Service Consommateurs Consumentendienst België 00-800-321-321-32</p> <p>CP COLGATE-PALMOLIVE</p> <p>F 92270 BOIS-COLOMBES</p> <p>B L 1160 BRUXELLES - BRU:</p> <p>RO Distribuitor: Colgate-Palmolive (România) SRL, bd. Barbu Văcărescu nr. 301 - 311, sector 2, București.</p> <p>MD Importator: LILCOR SRL, L. Moscova nr.21, Chișinău B-4041 HERSTAL.</p> <p>www.colgate.eu.com</p> <p>Producer/Producător: Colgate-Palmolive Manufacturing</p>	<p>GEbruksaAnwIzIng: Gebruik voor kinderen van zes jaar of jonger niet meer groter van een erwt. Zorg dat ze zo weinig mogelijk tandpasta inslikken. Gaad uw kind fluoride in een andere vorm gebruikt.</p> <p>INSTRUCȚIUNI DE FOLDSIRE: Copii de 6 ani sau mai mici. A se folosi o cantitate mărima unui bob de mazăre sub supravegherea unui adult pentru a reduce risul de ingesare. Dacă nu utilizează supliment de fluor din alte surse, vă rugăm să consultați medicul dent sau medicul de familie.</p> <p>Contient/Bevat/Conține: Fluorure de Sodium/Natriumfluoride/ Sodium Fluoride 0.32% w/w (1450ppmF)</p> <p>INGREDIENTS/INGREDIENTE/INGREDIENTEN: Sorbitol, Aqua, Hydrated Silica, PEG-12, Sodium Lauryl Sulfate, Cellulose Gum, Sodium Saccharin, Sodium Fluoride, Aroma, Hydroxypropyl Methylcellulose, Menthol, Glycerin, Cinnamal, Eugenol, Limonene, CI 77891, CI 42090.</p> <p>☎ F Service Consommateurs - France N° Cristal: 09 69 32 05 10 APPEL NON SURTAXE</p> <p>B L Service Consommateurs - Belgique Consumentendienst België 00-800-321-321-32</p> <p>CP COLGATE-PALMOLIVE</p> <p>F 92270 BOIS-COLOMBES</p> <p>B L 1160 BRUXELLES - BRUSSEL</p> <p>RO Distribuitor: Colgate-Palmolive (România) SRL, bd. Barbu Văcărescu nr. 301 - 311, sector 2, București.</p> <p>MD Importator: LILCOR SRL, Bd. Moscova nr.21, Chișinău B-4041 HERSTAL.</p> <p>www.colgate.eu.com</p> <p>Producer/Producător: Colgate-Palmolive Manufacturing</p>

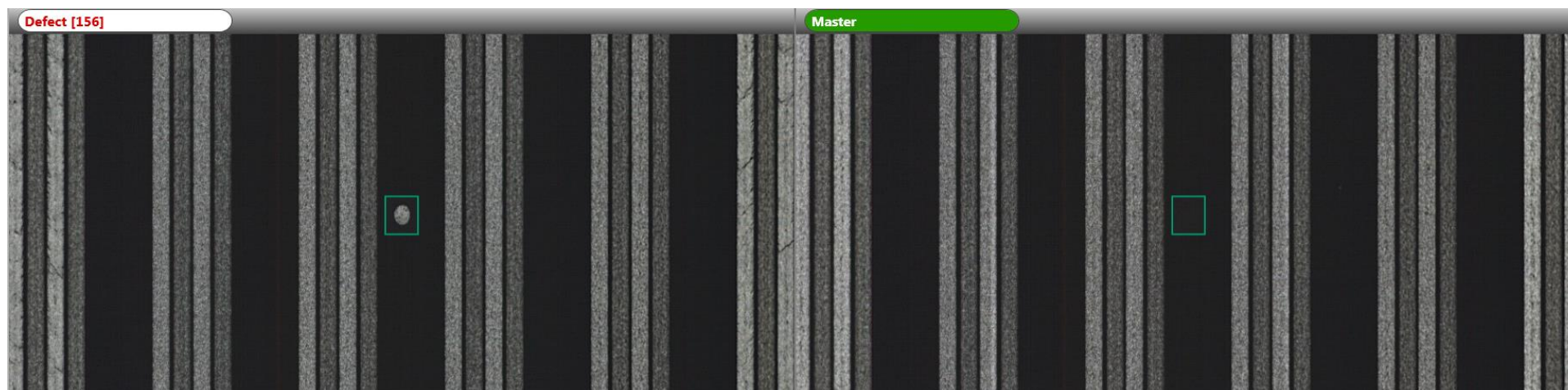


Security



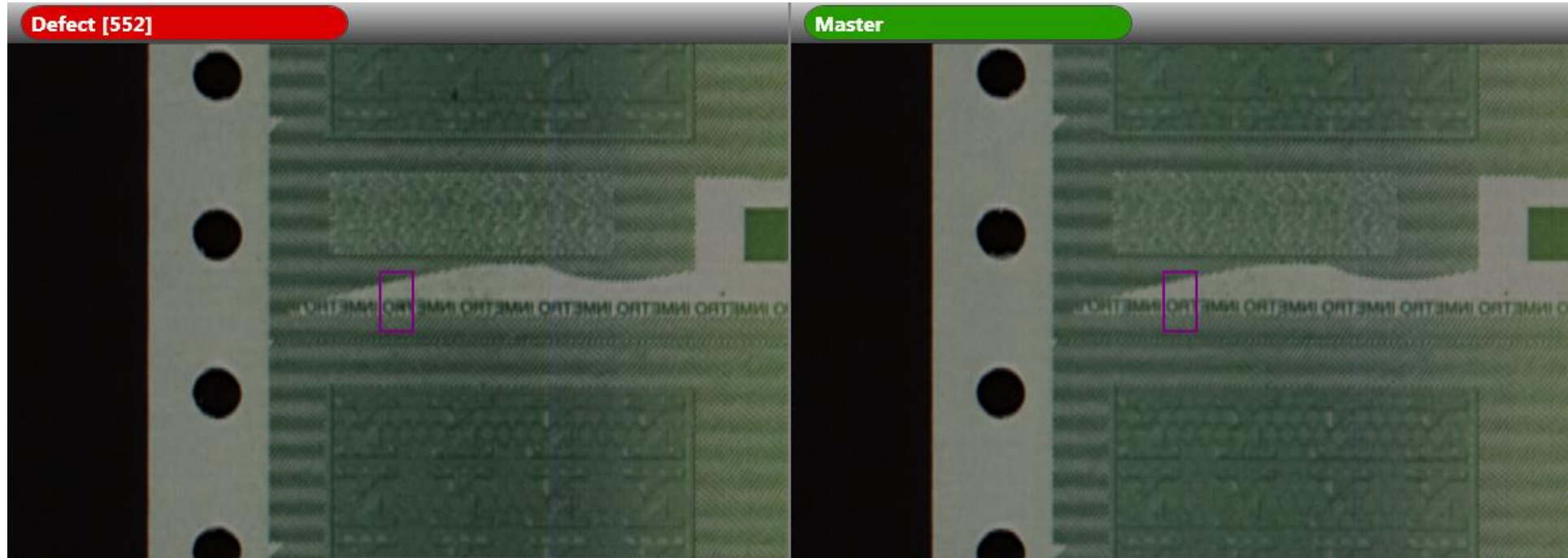


Security





Security



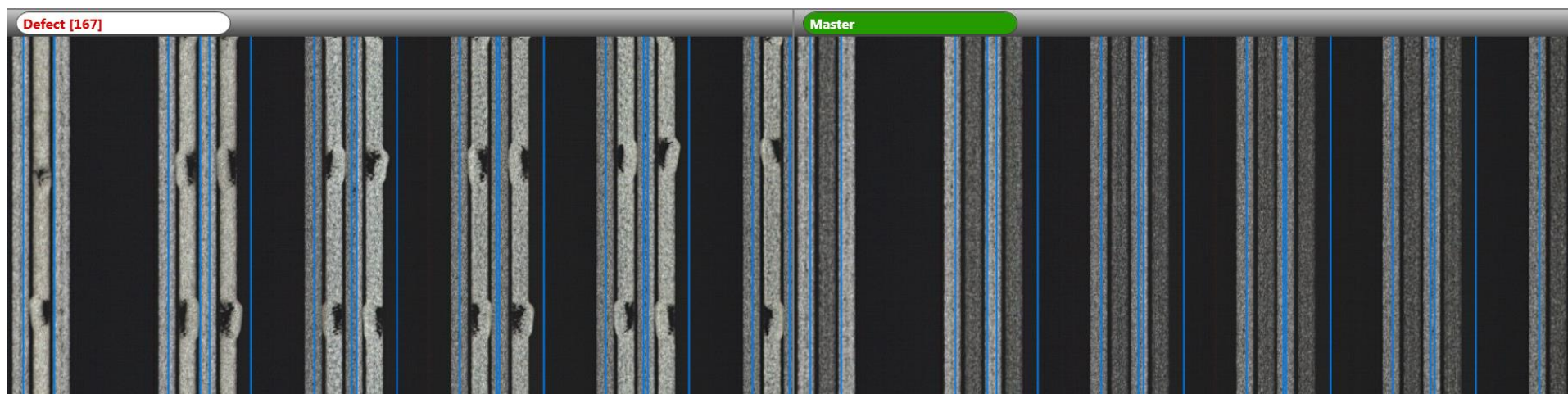


Security





Security



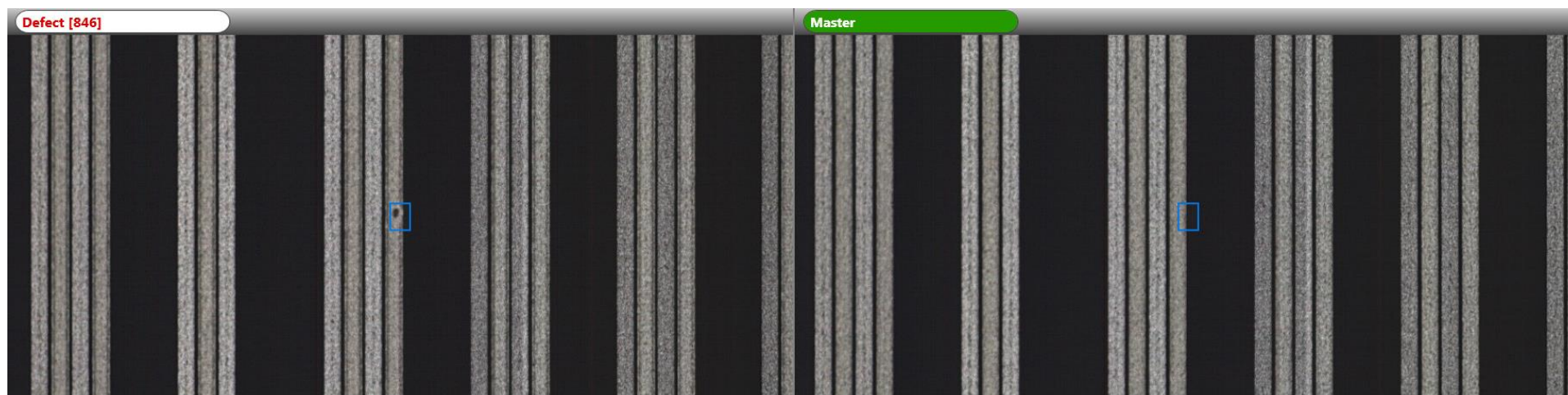


Security



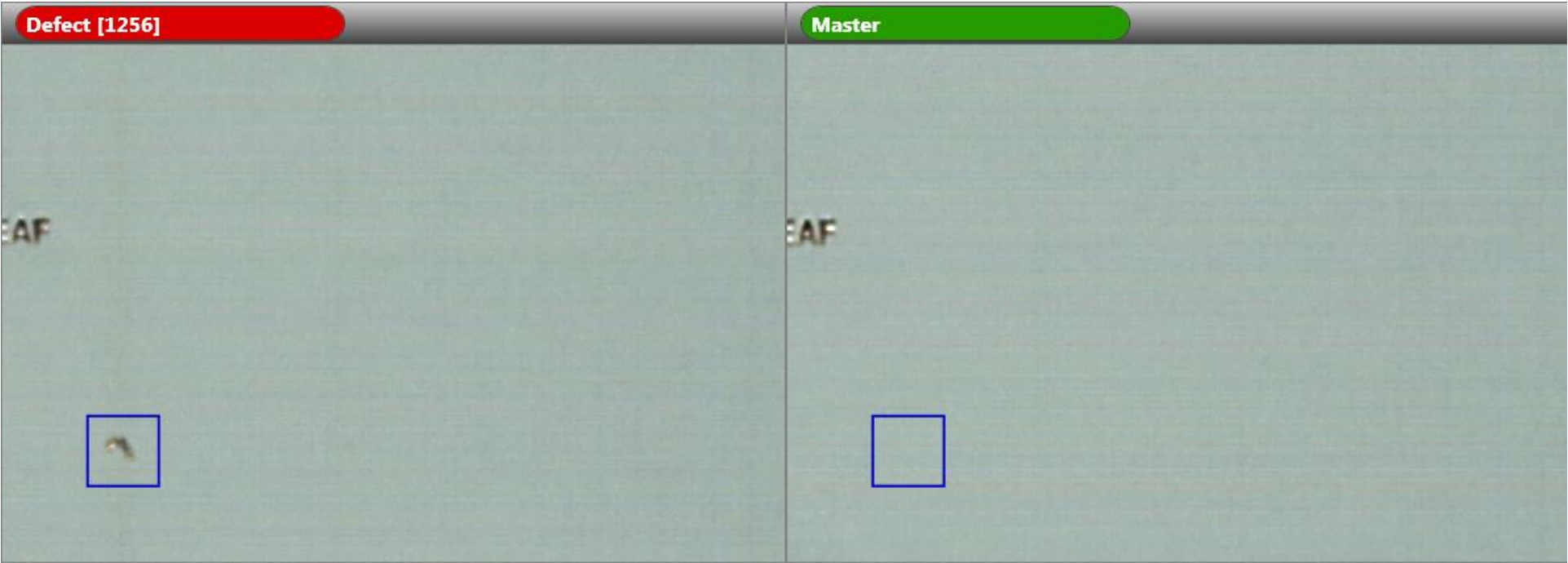


Security



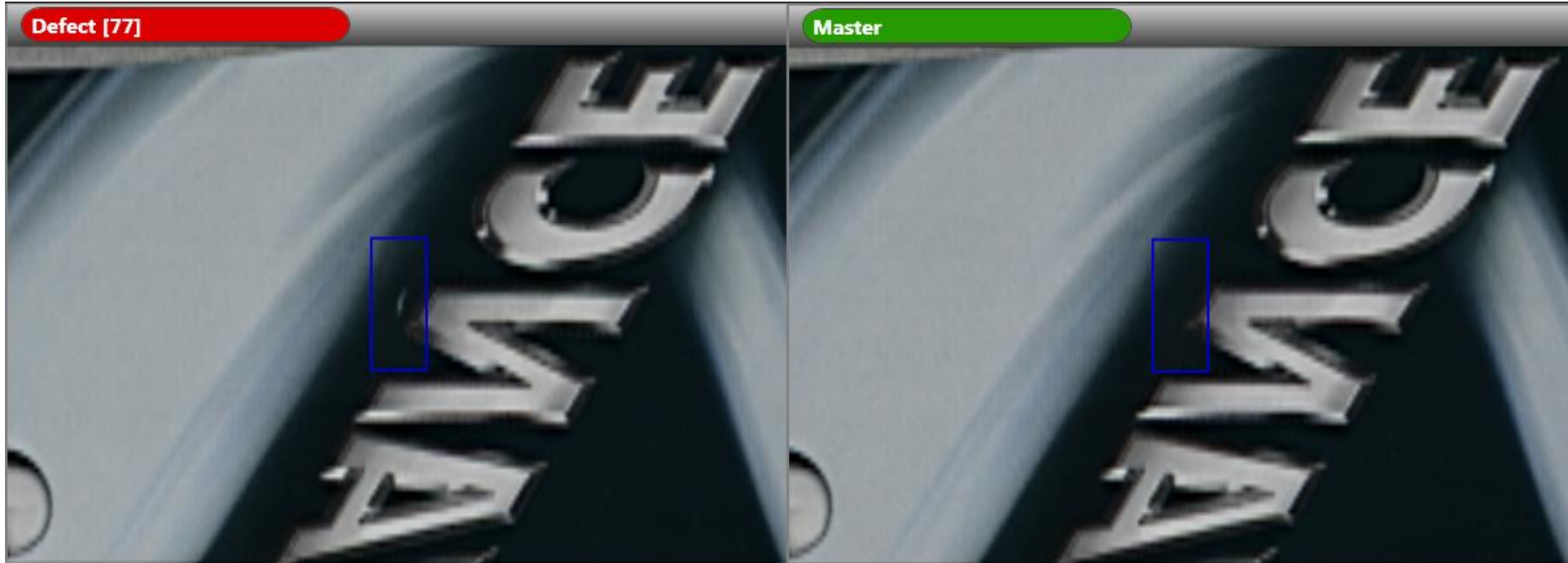


OTHERS





OTHERS





ADDITIONAL MODULES DEFECTS



Barcode Defects





Barcode Defects





Barcode Defects

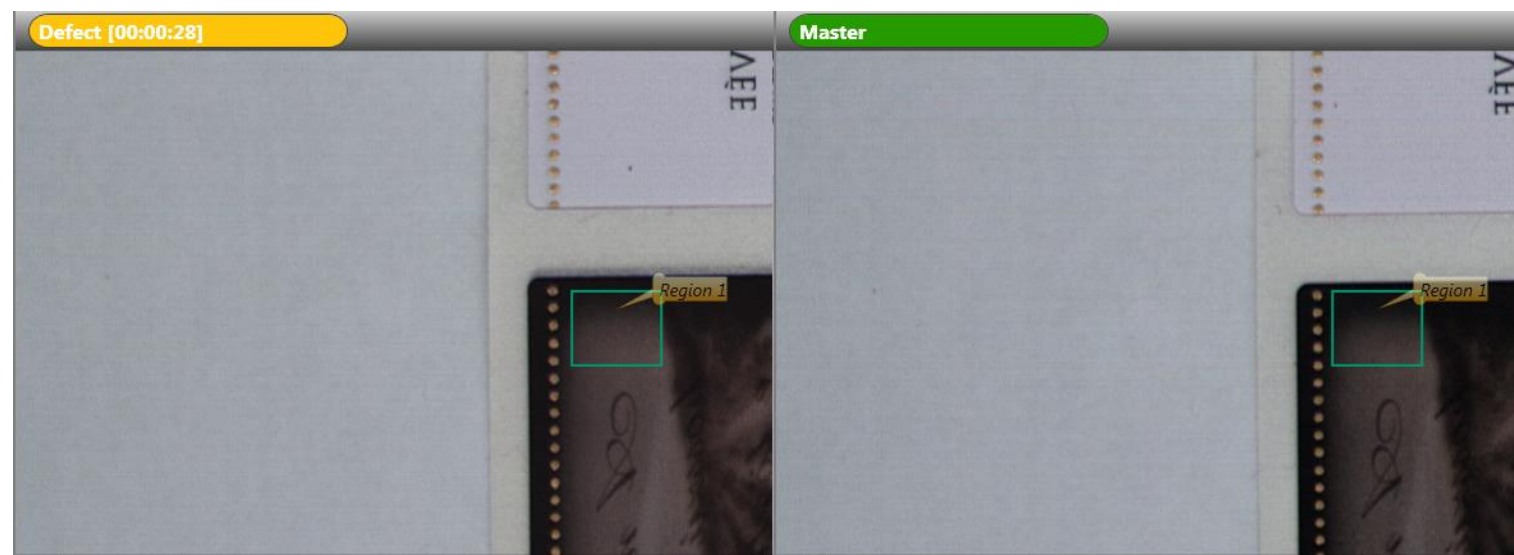
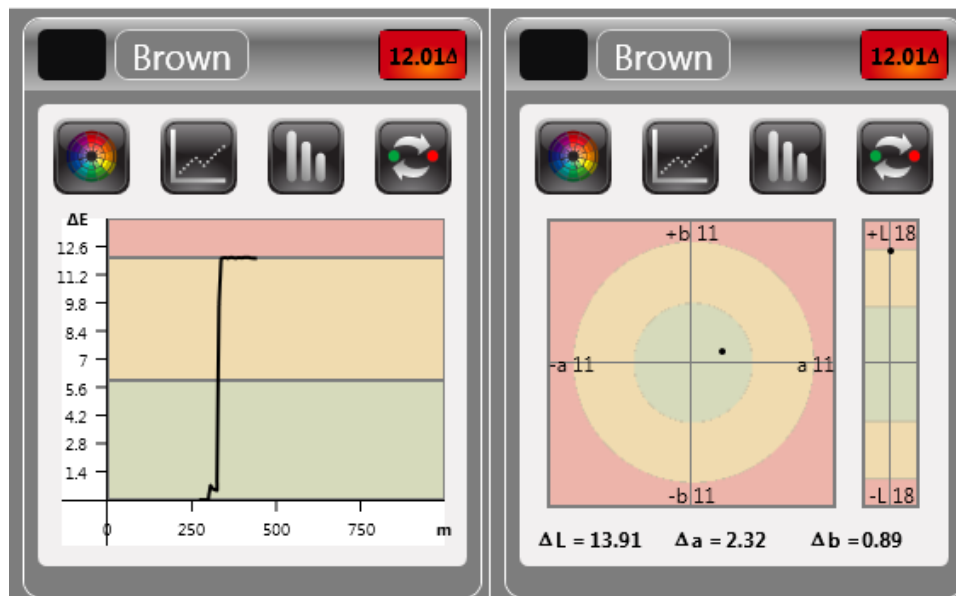


Barcode Defects





IDEal Color Monitoring





Thank you

The Printer's Choice | **AVT.**